

Supplementary information

## **Copolyformals containing metalloporphyrins as solid optical probes for amines detection**

*Lidia Mezzina<sup>a</sup>, Angelo Nicosia<sup>a,\*</sup>, and Placido G. Mineo<sup>a,b</sup>*

<sup>a</sup>Department of Chemical Sciences and INSTM UdR of Catania, University of Catania, V.le A. Doria 6, I-95125 Catania, Italy

<sup>b</sup>Institute for Chemical and Physical Processes, National Research Council (IPCF-CNR), Viale F. Stagno d'Alcontres 37, I-98158 Messina, Italy

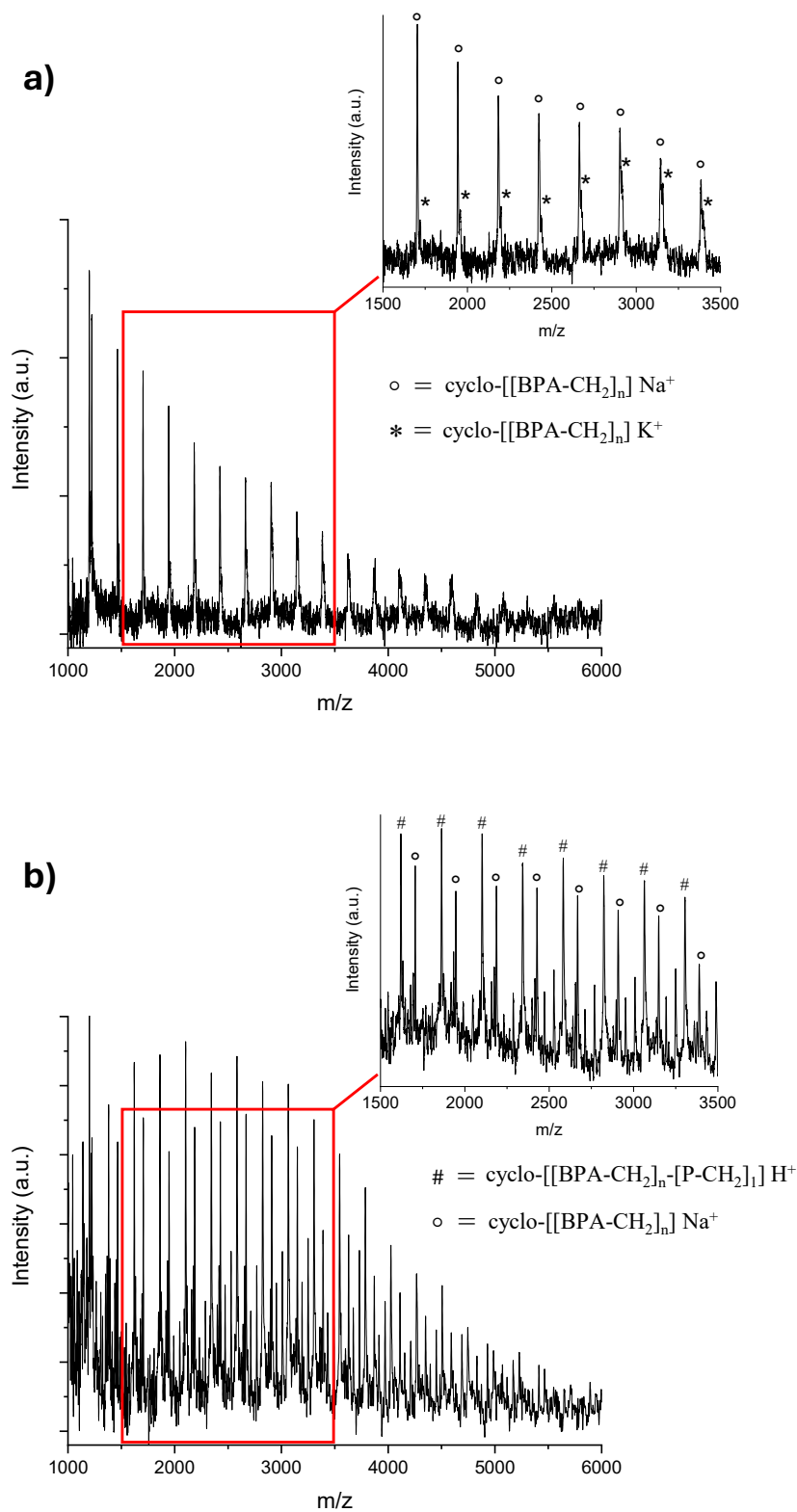
Corresponding author: [angelo.nicosia@unict.it](mailto:angelo.nicosia@unict.it)

Content:

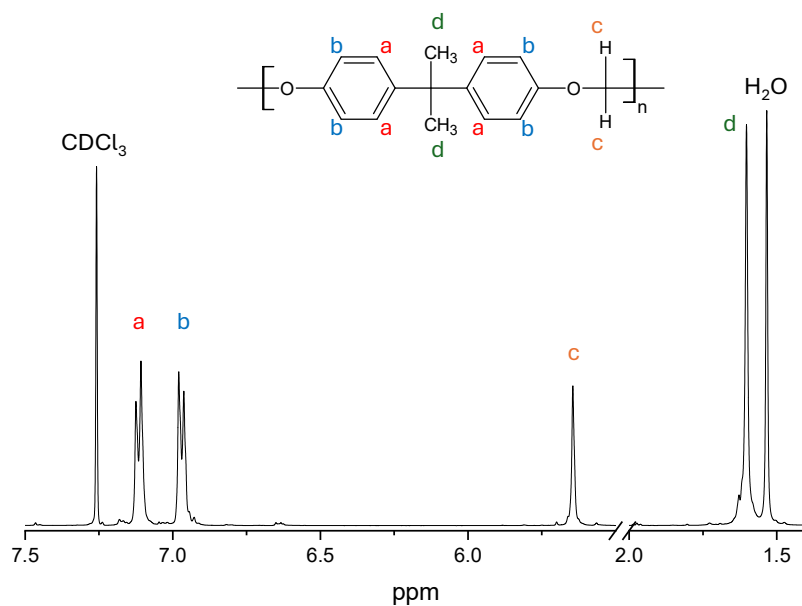
**Fig. S1.** MALDI-TOF Mass spectra of PEF (a) and PEF-P (b)

**Fig. S2.** <sup>1</sup>H-NMR spectrum of PEF

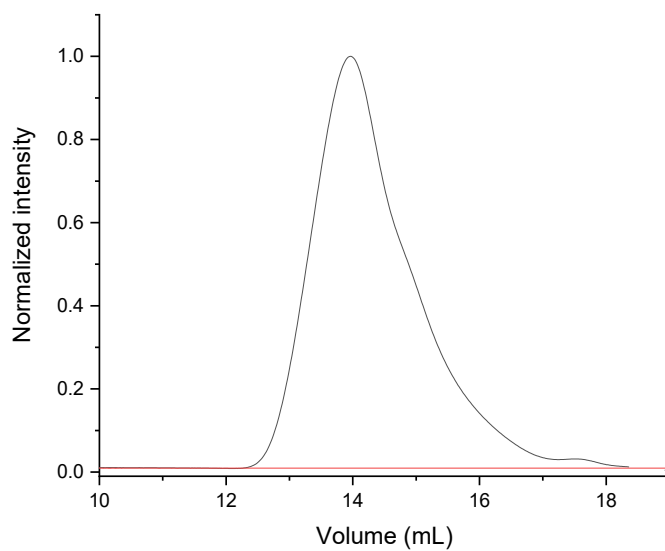
**Fig. S3.** GPC traces of PEF



**Fig. S1.** MALDI-TOF Mass spectra of PEF (a) and PEF-P (b)



**Fig. S2.**  $^1\text{H-NMR}$  spectrum of PEF



**Fig. S3.** GPC traces of PEF using refractive index (black line) and UV-Vis (set at 420 nm, red line) detectors connected in parallel.