

REPRESENTATION BETWEEN REALITY AND PROJECT: PIAZZA DEL GOVERNO IN ENNA

Mariateresa Galizia - Cettina Santagati

University of Catania, Faculty of Engineering, Department of Architecture and Town Planning

Palazzo del Governo.
First project idea of the
facade tower.The Palazzo del Governo (left) and the
Bank of Italy in a 40's (XX century) picture

The re-drawing of the project of Enna's Piazza del Governo, which was conceived by the architect Salvatore Caronia Roberti in 1937, 'is not considered as a representation of a book about the finished work, but as a subject of study which can reveal most of the intentions of the architect' (Pagnano 2003).

The 'visual' narrative of the place and of the relevant architecture uses both new and traditional representations in order to retrieve the compositional theory and practice of the designers and to highlight the connections with the history of the site. The relationship with the morphology of the place has been analyzed through the system of signs in order to understand the dichotomous choice between the irregularity of the urban fabric and the regular geometry of the ground plan and of the compact buildings which delimit it.

A space which has been planned and organized, and which has a distinctive symbolic character which is representative of its regime architecture. Caronia Roberti presents a trapezium-shaped ground plan, the oblique sides converging on the façade of the Palazzo del Governo, a firmly rooted symbol of authority and control in the history of Enna.

A visually well-ordered place as well as a monument which, reconstructed through a virtual representation, monopolizes the view in an impressive and metaphysical whole.

In this way drawing becomes an instrument of interpretation which helps retrace backwards the process of learning and understanding of the designer, his choices, the underlying rules and the preliminary sketches of the project which were not carried out, thus giving 'life to a delayed replica ... by evoking both the invisible and the impossible quality of an object' (Purini 1999). When compared with today's graphs of data survey, the analysis of the drawings of the project, which have been developed into a virtual 3D model, confirms, at a spatial level, the validity of the planning choices carried out and the quality of the stylistic and formal language adopted.

Bibliography

Pagnano, G., 2003, 'Presentazione', *Ikhnos* n. 1, Lombardi editore, Siracusa
Purini, F., 1999, 'Costruire lo sguardo', *XY* n. 35-36-37



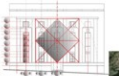
Enna's cadastral map, 1667



Bank of Italy building in the 40's (XX cent)



The project of Enna's Piazza del Governo, 1937

Camera di Commercio building
Project sketch by Caronia Roberti