

LETTER • OPEN ACCESS

## When will unusual heat waves become normal in a warming Africa?

To cite this article: Simone Russo *et al* 2016 *Environ. Res. Lett.* **11** 054016

View the [article online](#) for updates and enhancements.

### Related content

- [Top ten European heatwaves since 1950 and their occurrence in the coming decades](#)  
Simone Russo, Jana Sillmann and Erich M Fischer
- [On the need for regional climate information over Africa under varying levels of global warming](#)  
C J Lennard, G Nikulin, A Dosio *et al.*
- [Heat wave exposure in India in current, 1.5 °C, and 2.0 °C worlds](#)  
Vimal Mishra, Sourav Mukherjee, Rohini Kumar *et al.*

### Recent citations

- [The Greening of the Sahara: Past Changes and Future Implications](#)  
Francesco S.R. Pausata *et al*
- [Barriers to occupational heat stress risk adaptation of mining workers in Ghana](#)  
Victor Fannam Nunfam *et al*
- [CORDEX MultiRCM Hindcast Over Central Africa: Evaluation Within Observational Uncertainty](#)  
Thierry N. Taguela *et al*

## Environmental Research Letters



## LETTER

## When will unusual heat waves become normal in a warming Africa?

## OPEN ACCESS

RECEIVED  
8 February 2016REVISED  
22 April 2016ACCEPTED FOR PUBLICATION  
26 April 2016PUBLISHED  
12 May 2016

Original content from this work may be used under the terms of the [Creative Commons Attribution 3.0 licence](#).

Any further distribution of this work must maintain attribution to the author(s) and the title of the work, journal citation and DOI.

Simone Russo<sup>1</sup>, Andrea F Marchese<sup>2</sup>, J Sillmann<sup>3</sup> and Giuseppina Immé<sup>2</sup><sup>1</sup> Institute for Environmental Protection and Research (ISPRA), Rome, Italy<sup>2</sup> Department of Physics and Astronomy, University of Catania, Italy<sup>3</sup> Center for International Climate and Environmental Research (CICERO), Pb. 1129 Blindern, NO-0318 Oslo, NorwayE-mail: [simone.russo@isprambiente.it](mailto:simone.russo@isprambiente.it)**Keywords:** heat wave, temperature extremes, climate indices, cordex Africa, regional climate modelsSupplementary material for this article is available [online](#)**Abstract**

Africa is one of the most vulnerable continents to climate change. In the upcoming decades the occurrence of longer, hotter and more frequent heat waves could have a strong impact on human mortality and crop production. Here, by applying the heat wave magnitude index daily to temperature reanalysis data, we quantify the magnitude and the spatial extent of the most extreme heat waves experienced in Africa between 1979 and October 2015 across different seasons. Results show that in the recent years Africa experienced hotter, longer and more extent heat waves than in the last two decades of the 20th century. In the future, 50% of regional climate projections suggest that heat waves that are unusual under present climate conditions will occur on a regular basis by 2040 under the most severe IPCC AR5 scenario (i.e. RCP8.5).

**1. Introduction**

An international climate agreement was signed in Paris on 12th December 2015 following negotiations between 195 countries during the 21st Conference of Parties (COP21) meeting. The agreement is designed to reduce greenhouse gas emissions and limit the average rise in global temperatures to well below 2 °C above pre-industrial times. Moreover, countries committed to raising \$100 bn a year by 2020 to help poor countries adapt their economies, and accept a new goal of net zero emissions by later this century.

Africa is likely to pay a heavy price for global warming, despite having contributed little to its cause. It is one of the most vulnerable continents due to its high exposure and low adaptive capacity (IPCC 2014). In the past three decades Africa suffered 27% of the world's reported fatalities from natural catastrophes (614 250 people) and experienced 1560 weather-related catastrophes, such as drought, heatwaves, storms and floods (Munich Re 2011).

Near surface temperatures have increased by 0.5 °C or more during the last 50–100 years over most parts of Africa (Hulme *et al* 2001, Jones and Moberg 2003, Kruger and Shongwe 2004, Schreck and Semazzi 2004, New *et al* 2006, IPCC 2007, Rosenzweig

*et al* 2007, Trenberth *et al* 2007, Christy *et al* 2009, Collins 2011, Grab and Craparo 2011, Hoffman *et al* 2011, Mohamed 2011, Stern *et al* 2011 Funk *et al* 2012, Nicholson *et al* 2013).

In northern Africa the northwestern Sahara experienced 40–50 hot days per year in the period 1989–2009 (Vizy and Cook 2012). In the last 15 years in South Africa, the probability of austral summer heat waves has increased with respect to the period 1961–1980. This is associated with deficient rainfall conditions that tend to occur during El Niño events (Lyon 2009). In analogy, in northern Africa there is a projected increase in number of hot days in the coming decades (Patricola and Cook 2010, Vizy and Cook 2012).

In a future warmer climate with increasing mean temperatures, African heat waves will not only become more frequent; their duration and intensity are very likely to increase as well (Min *et al* 2011, Coumou and Rahmstorf 2012, IPCC 2012), strongly challenging the adaptive capacity and resilience of the population. Longer, hotter and more frequent heat waves are very likely to have a strong impact on mortality, occurrence of wild fires and crop failure. In this study we use the heat wave magnitude index daily (HWMId) defined in Russo *et al* (2015), which takes into account the

severity of temperature extremes as well as heat wave duration. The HWMId enables the comparison of heat waves occurring in different places and times. We focus on Africa and estimate the magnitude of seasonal extreme heat waves in the past 37 years (1980–2014) from gridded reanalysis data, and in the future until 2100 from 13 CORDEX-Africa regional climate projections under two different representative concentration pathways (RCP4.5 and RCP8.5) scenarios. Thereby we investigate the area affected by heat waves at different level of magnitude in order to assess when a heat wave event that was rare in the present, such as the one that occurred in Russia in the summer 2010, will become normal (i.e. occurring every year) under different RCPs.

## 2. Materials and methods

### 2.1. HWMId

The Africa continent mainly spans the intertropical zone between the Tropic of Cancer and the Tropic of Capricorn. Only the northernmost and the southernmost fringes of the continent have a Mediterranean climate because they are not located under the tropics. Because of this geographical location, where solar radiation intensity is always high, heat waves can occur in any season in Africa. In contrast to Europe, where heat waves with the highest impacts predominately occur in summer (e.g. figure 1). For this reason, differently from Russo *et al* (2015) where the HWMId was defined as the maximum magnitude of the heat waves in a year, here we apply the HWMId to a moving block of three months in which the HWMId is defined as the maximum magnitude of the heat waves in each block.

In order not to split heat waves that start in a 3 month block and end in the consecutive 4th month not included in the block, the HWMId is calculated for 12 moving blocks of 3 month: January–February–March, February–March–April, ..., December–January–February (DJF). As in Russo *et al* (2015) a heat wave is a period of at least three consecutive days with maximum temperature above the daily threshold for the reference period 1981–2010. The threshold is defined as the 90th percentile of daily maxima, centered on a 31 d window. The magnitude of a heat wave is calculated by summing up the magnitude of each hot day composing a heat wave as described in Russo *et al* (2015). Here, we calculate the HWMId on reanalysis data and CORDEX-AFRICA model outputs for the period 1979–2100 over the Africa domain. The HWMId calculation has been carried out using the HWMId function recently included in the R package called *extRemes* (Gilleland and Katz 2011).

### 2.2. Models and observations

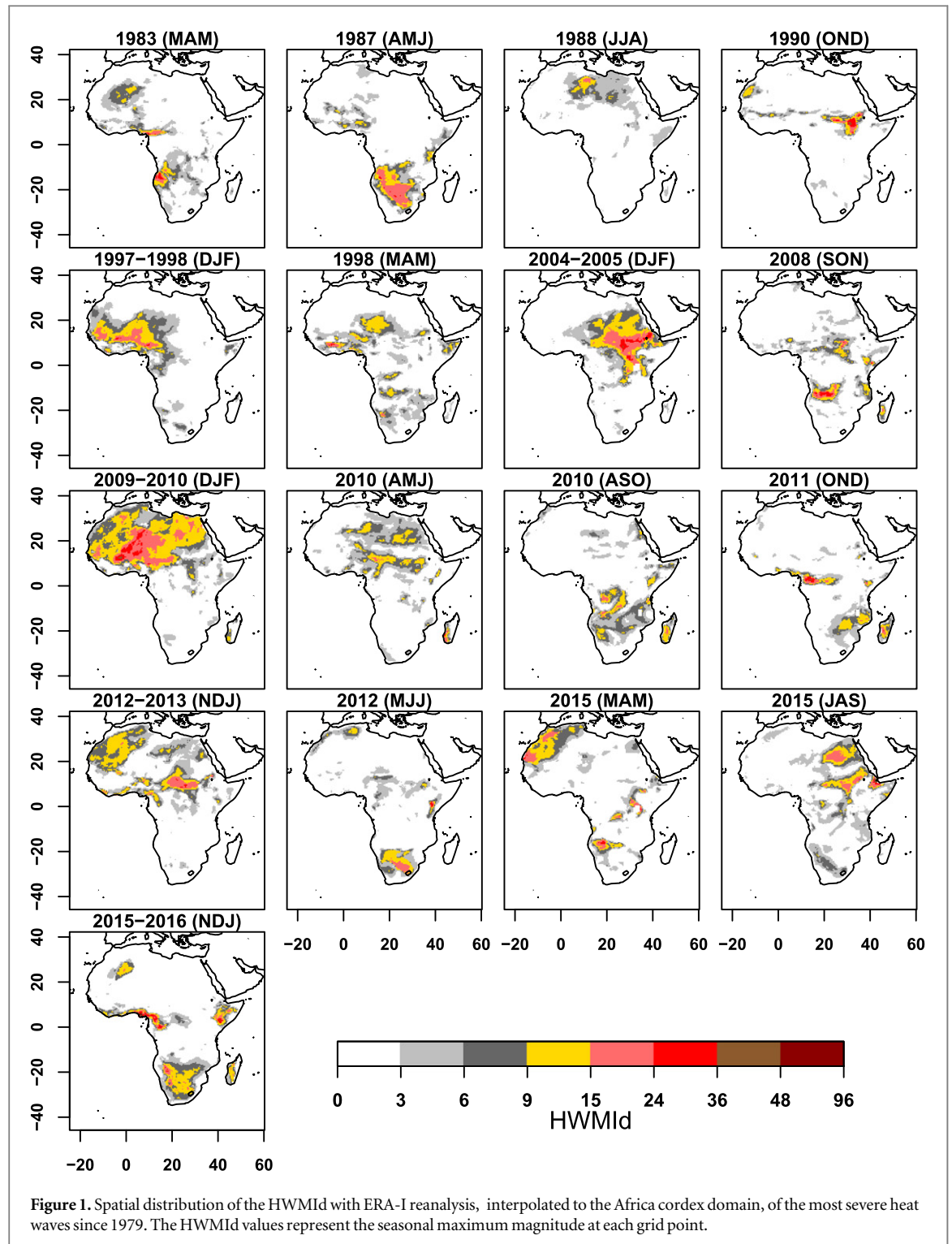
Daily maximum temperature data from the ERA-Interim (ERA-I) reanalysis from the European Centre

for medium-range weather forecasts (Dee *et al* 2011) are applied to study heatwaves in the present climate. The dataset has a 6-hourly time resolution and is available from 1979 to January 2016. The ERA-I is based on a T255 resolution ( $0.7^\circ$ ,  $\sim 79$  km). The data are interpolated to the CORDEX-Africa (Coordinated regional downscaling experiment—African Domain) grid ( $0.44^\circ$ ,  $\sim 50$  km) of the projected model data for comparison. The HWMId have been calculated on both interpolated and non-interpolated ERA-I datasets.

For historical and future projections (period 1979–2100) we used daily maximum temperature from 13 regional climate model (RCM) simulations of the CORDEX-Africa multi-model scenario experiment with a resolution of  $0.44^\circ$ . In the set of simulations, 4 RCMs are driven by 13 different general circulation models forced with two scenarios, RCP4.5 and RCP8.5 adopted by the Intergovernmental Panel on Climate Change (IPCC) for its fifth Assessment Report (AR5, Christensen *et al* 2013). Equivalent climate simulations using the other RCPs (RCP2.6 and RCP6.0) were not available. For the comparison with the reanalysis we use historical simulations (Taylor *et al* 2012) for the period 1979–2005. In detail, the ensemble model output used in this study is composed of the following 13 simulations listed in table 1: eight RCA model simulations (Swedish Meteorological and Hydrological Institute) forced with eight global climate models (CCCma-CanESM2, CNRM-CERFACS-CNRM-CM5, ICHEC-EC-EARTH, IPSL-IPSL-CM5A-MR, MIROC-MIROC5, MPI-M-MPI-ESM-LR, NCC-NorESM1-M, NOAA-GFDL-GFDL-ESM2M); three CCLM simulations (CLM Community) driven by lateral boundary conditions of three global climate models (CNRM-CM5, EC-EARTH and MPI-ESM-LR); one simulation for RACMO (Royal Netherlands Meteorological Institute), and one for HIRHAM5 (Danish Meteorological Institute), driven by ICHEC-EC-EARTH global model. More information on these models and simulations may be found at [http://cordex.org/index.php?option=com\\_content&view=article&id=242&Itemid=769](http://cordex.org/index.php?option=com_content&view=article&id=242&Itemid=769).

### 2.3. Percentage of spatial area in heat wave

The percentage of land area in a specific season experiencing HWMId values greater than a given magnitude level ( $\text{HWMId} \geq 3, 6, 9, 15, 24$ ) as in figures 2–4 and table 2 is calculated with respect to the land area of the CORDEX-Africa domain (13761 grid points) for both model data and ERA-I reanalysis interpolated to the CORDEX-Africa grid (see section 2.2). For comparison, the magnitude of the heat wave that occurred in Russia in 2010 is also calculated with ERA-I reanalysis interpolated to a grid with a spatial resolution of  $0.44^\circ$ . The percentage of spatial areas at each HWMId level during the Russian



heat wave are normalized with respect to the total number of grid points of the African domain. As done for the African heat waves the HWMId for the 2010 Russian heat wave is calculated at seasonal scale.

### 3. Extreme african heatwaves since 1979

Figures 1 and S1 show the geographical pattern of the HWMId for the most extreme events that occurred since 1979, calculated with ERA-I interpolated and

non-interpolated reanalysis data, respectively (see section 2.2). Most of these events occurred during warm ENSO periods (WMO 2011). During the famous drought of 1982–1983 a heat wave affected many African regions. In particular this event had long persistence and severe magnitude in boreal spring season (MAM) in Burkina Faso, Nigeria, Cameroon, Angola, Namibia and South Africa. The highest HWMId values were experienced in Angola and in the Democratic Republic of Congo (figure 1). The spatial extent of this heat wave was not very large when

**Table 1.** List of the 13 CORDEX-AFRICA used models.

Model letter	Institute	RCM	Driving GCM
A	SMHI	RCA4	CCCma-CanESM2
B	SMHI	RCA4	CNRM-CM5
C	CLMcom	CCLM4-8-17	CNRM-CM5
D	CLMcom	CCLM4-8-17	EC-EARTH
E	SMHI	RCA4	ICHEC-EC-EARTH
F	KNMI	RACMO22E	ICHEC-EC-EARTH
G	DMI	HIRHAM5	ICHEC-EC-EARTH
H	SMHI	RCA4	IPSL-CM5A-MR
I	SMHI	RCA4	MIROC5
L	CLMcom	CCLM4-8-17	MPI-ESM-LR
M	SMHI	RCA4	MPI-ESM-LR
N	SMHI	RCA4	NCC-NorESM1-M
O	SMHI	RCA4	NOAA-GFDL-GFDL-ESM2M

compared with those of the most severe African heat waves of the recent years (table 2, figures 1, 2).

A similar heat wave to that of 1983 was recorded in the period 1987–1988 when South Africa was struck by another drought. This event had its heat center in South Africa in April–May–June (AMJ). It had a lower peak than that of the previous event in 1983 and a larger spatial extent at some magnitude level.

In the boreal summer (JJA) of 1988 temperatures were above normal over Algeria and Libya with HWMId peak equal to 19. This heat wave was not more severe than those in 1983 and in 1987 (see table 2). Another minor heat wave occurred in 1990, which covered mainly regions across the equator just after the equinox of 23rd September. This is when the solar terminator (the ‘edge’ between night and day) is perpendicular to the equator and the temperature reaches its maximum values at these latitudes.

In a recent study, Fontaine *et al* (2013) have shown that the occurrence of heat waves has clearly increased after 1996, except during the warm ENSO episodes of 1983 and 1987. This is confirmed by our data record split into two periods of 18 years: 1979–1996 (past) and 1997–2014 (present). In particular in the last years, Africa has experienced hotter, longer and more extent heat waves than in 1979–1996 (figure 2). In the present years, the percentage of land area experiencing a heat wave with magnitude greater than 3, 6 or 9 has increased on a seasonal basis by a factor of 2 with respect to the past (see figure 2). As an example, in the past only 5% of African land area experienced heat waves with magnitude equal to or greater than 3 on a seasonal basis, whereas in the present this magnitude of heat wave became very common across all seasons over 12% of African continent (see figure 2(c)). Similar results are shown for the percentage of area covered by heat waves with magnitude greater than 6 and 9 (figure 2(c)). The most unusual heat waves of the past period that occurred in 1983 and 1987 had a

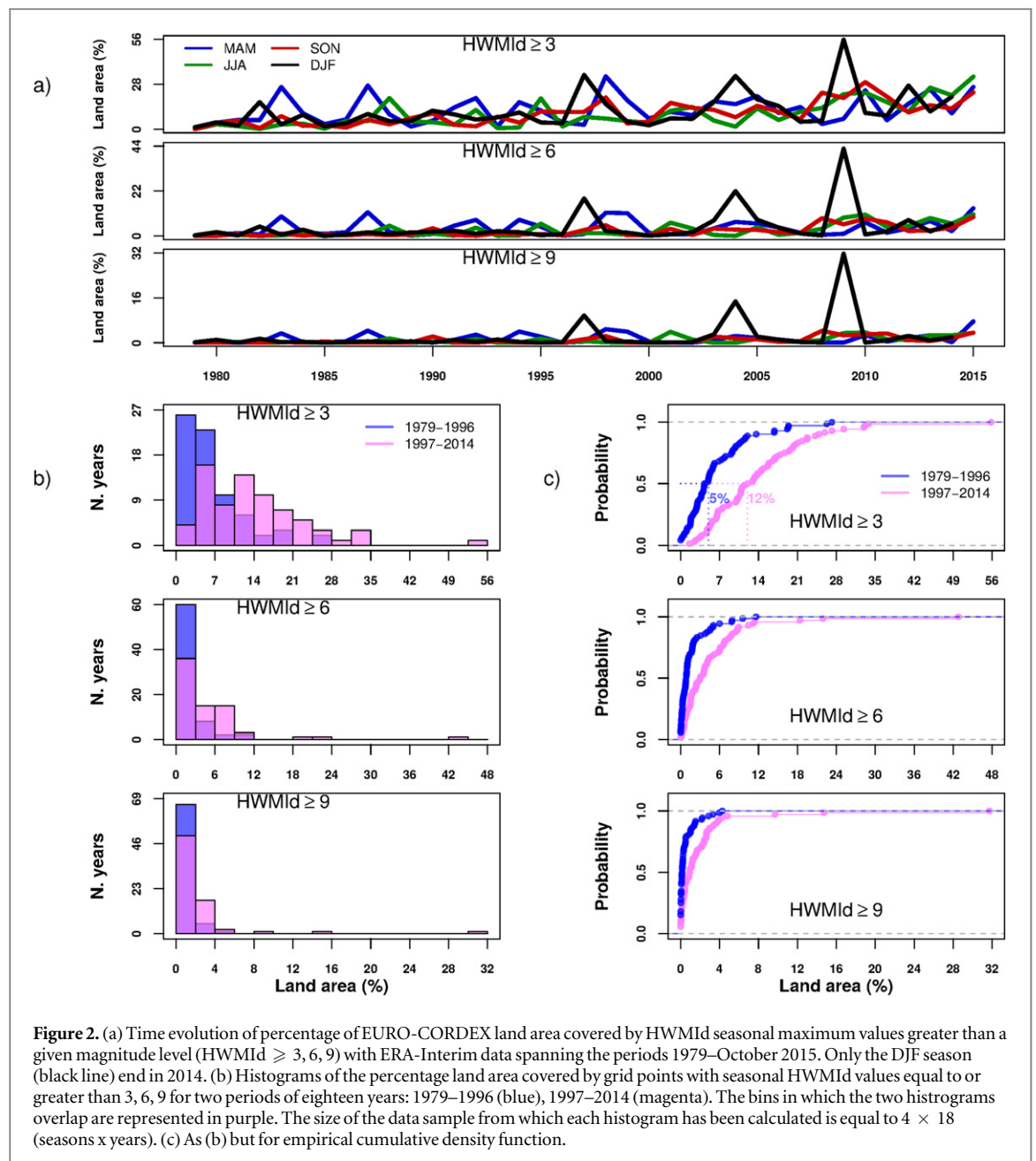
comparable or even lower spatial extent than the heat wave events that occurred in 1998 in DJF and MAM. The two heat waves in 1998 hit a large part of The Sahel region (Burkina Faso, Benin and Southern Mali).

In the last decade starting from 2004, severe heat waves were recorded almost on an annual basis, not only during warm ENSO events (figures 1, 2, table 2). The heat center in 2005 was located in central East Africa, whereas in 2010 the heat wave was confined to central Sahel region. All other events had a strong impact in southern Africa and Madagascar. Finally, according to the WMO (2011) the global average near-surface temperature in 2015 was the warmest on record reaching approximately 1 °C above the 1850–1900 average. This is due to a combination of a strong *El Niño* and human-induced global warming (WMO 2015).

*El Niño* affects the global atmospheric circulation, altering weather patterns around the world and temporarily elevates global temperatures (Kenyon and Hegerl 2008, WMO 2015). Many extreme heat waves detected in this study occurred during an *El Niño* event. However, their magnitude seems more strictly depending on the regional mean temperatures than from the strength of *El Niño*.

For instance, during the very exceptionally *El Niño* of 1997–1998, the heat wave in DJF was much weaker than that in DJF 2009–2010 (see table 2) with regional temperature anomalies being much greater in 2009–2010 than in 1997–1998 (WMO 2015). According to ERA-I, the DJF temperature anomaly with respect to the 1980–1990 decadal average was 0.19 °C and 0.98 °C for 1997–1998 and 2009–2010, respectively, and the magnitudes of DJF heat waves rising steadily from 1997–1998, 2004–2005 and 2009–2010 (see table 2).

In 2015 heat waves affected Europe, northern Africa and the Middle East through the late spring and summer, with the heat center shifting from month to month and with many new temperature records set. The African continent observed its second warmest year, just after 2010 (WMO 2015), experiencing heat waves in almost every season (see figure 1). In May, high temperatures affected Burkina Faso, Niger and Morocco. The high temperatures persisted for many days in these regions in Spring (MAM) of 2015. At the same time a heat wave hit southern Africa where record high temperatures were exceeded on a regular basis. In the late summer of 2015 (JAS) consecutive hot days were recorded on the eastern coast of Africa with maximum HWMId values recorded in Egypt, Eritrea and Ethiopia (figure 1). During boreal spring of 2015 in South Africa, record high temperatures were exceeded on a regular basis. Finally, in NDJ 2015 a very extreme heat wave with a peak greater than that recorded in 2009–2010 affected this region (table 2, figure 1).

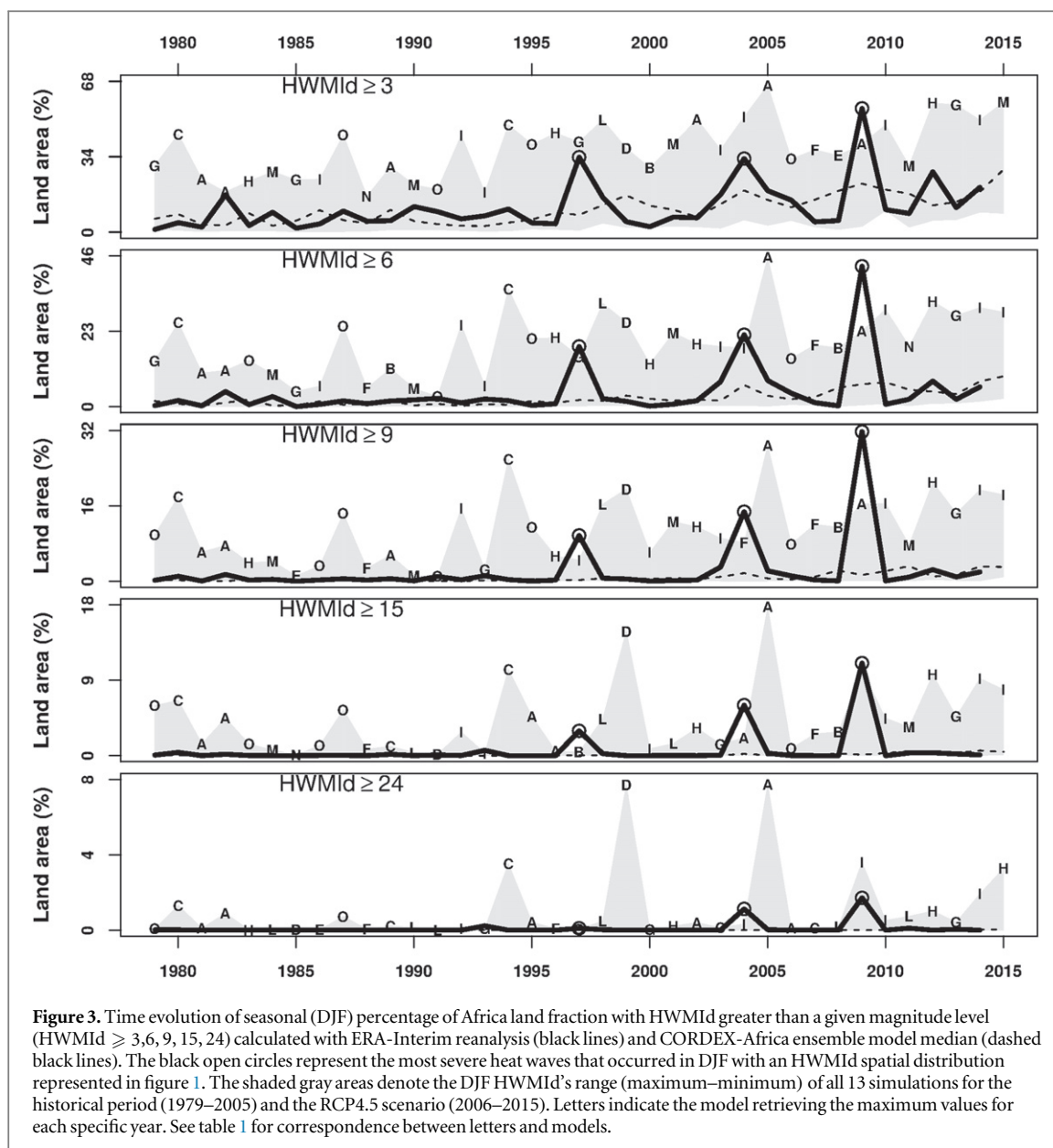


### 3.1. Unusual heat waves (USWs)

Apart from the most extreme African heat wave of our data record that occurred in DJF 2009–2010, all other historical heat waves in Africa in the period between 1979 and January 2016 had lower spatial extent than the extreme heat wave of 2010 in Russia (table 2, figure 1). In particular, the 2010 Russian heat wave shows a spatial extent and a spatial HWMId maximum at least double that of the most severe African heat waves in the past 37 years. As demonstrated by many studies (Barriopedro *et al* 2011, Russo *et al* 2014, Christidis *et al* 2015, Russo *et al* 2015, Zampieri *et al* 2016) the 2010 Russian heat wave was a very unusual event in Europe and across the entire globe. Russo *et al* (2015) estimated that the return period of the 2010 Russian heat wave was at least 66 years, which is the maximum length of the European climate

assessment & data (Haylock *et al* 2008, ECA&D, [www.ecad.eu](http://www.ecad.eu) spanning from 1950–September 2015. Considering the different climate conditions between Africa and Europe, the HWMId defined at seasonal scale enables us to compare African heat waves with the 2010 Russian heat wave, but only on a physical basis. Of course, heat waves with similar magnitude and spatial extent can have different impacts in regions with different vulnerability and underlying climate conditions.

An UHW is defined here only from a physical point of view without considering its possible impact. In this study, a UHW is a rare event that has not occurred in Africa at least since 1979, with a spatial extent at each magnitude level equal to the greatest percentage of area of all the historical African heat waves reported in table 2. This heat wave, greater in magnitude and

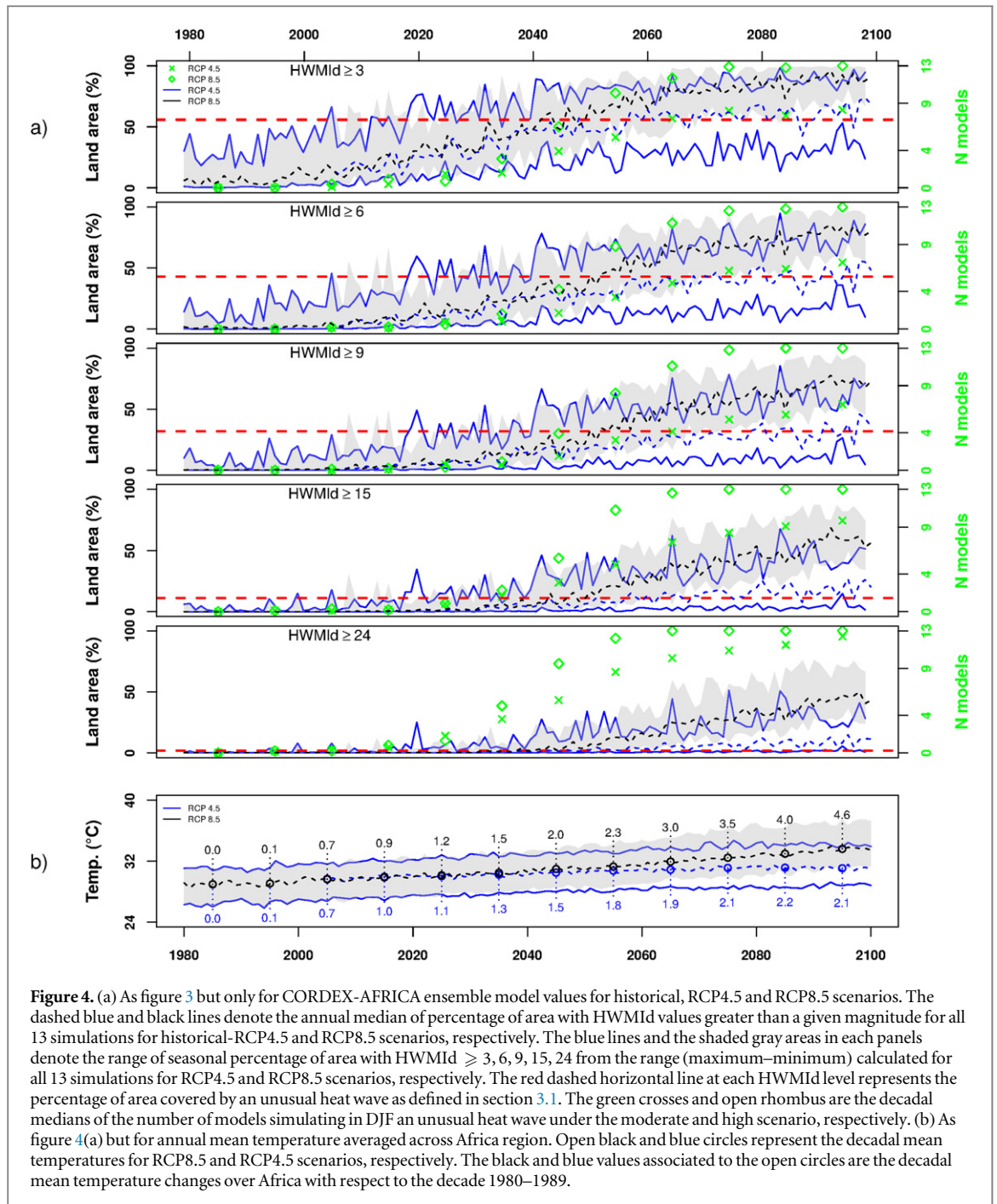


spatial extent than the one in Africa in DJF 2009–2010, is used here as reference to assess when UHWs will become normal with increasing temperature in Africa. In this study a UHW (see table 2) is considered normal, within a given season, if it occurs with a frequency of once a year.

#### 4. Model evaluation (1979–2015)

We use an ensemble of 13 RCMs (see section 2.2) to evaluate the simulated heat wave magnitude and extent against observations. Kim *et al* 2013 did an evaluation of  $T_{\text{AVG}}$ ,  $T_{\text{MAX}}$ ,  $T_{\text{MIN}}$  and other variables in the CORDEX-Africa hindcast, using a variety of reference datasets and comparison of outputs from multiple models against multiple observations. They show that RCM skill varies according to variables, regions and metrics. Models perform generally better for  $T_{\text{AVG}}$  and  $T_{\text{MAX}}$  than for  $T_{\text{MIN}}$  in both the

spatial distribution and seasonal cycle. Our models evaluation is based on how realistically the ensemble models can reproduce the HWMI magnitude and extent for each single season. The simulated HWMI values for DJF in a 37 year period (1979–2015) representing present-day climate are shown in figure 3. The shaded areas in each panel denote the range from the minimum to the maximum percentage of area of all 13 simulations for each model year and at each level of magnitude. The observation's spatial extent of each level is within the spread of the ensemble models for each year. The ensemble of all the models at different HWMI levels captures the general trend of the spatial area in heat waves in the period 1979–2015. According with a KS-test applied to each HWMI level, the null hypothesis (i.e. the ensemble model median is equal to the spatial area in a heat wave as simulated with ERA-I) is not rejected at 1% level of significance. The same results are



obtained across all the other seasons (see figures S2–S4). However, it is important to note that the most extreme heat wave that occurred in Africa in DJF 2009–2010 (see table 2 and figure 2) was simulated only by one out of 13 models.

## 5. Heatwaves in the future

Temperatures over almost all land areas, including Africa, are projected to rise faster than the global mean temperature during the 21st century (Christensen *et al* 2007, Joshi *et al* 2011, Sanderson *et al* 2011, James and Washington 2013, IPCC 2014, Seneviratne *et al* 2016). Thus, it is expected that along with

warming temperatures, a significant percentage of African land fraction will see more intense heat waves in a shorter time horizon than that estimated for Europe and other continents (Clark *et al* 2006, Fischer *et al* 2013, Russo *et al* 2015). In recent years (2004–2015) Africa has experienced heat waves at least every two years.

Temperatures over subtropical Africa have risen more than twice the global rate over the last five decades (IPCC 2014). In the two warmest years on record, 2010 and 2015, Africa was hit by very intense heat waves during different seasons. Both reanalysis and ensemble model simulations show that a larger percentage of the African continent is already



**Table 2.** List of record-breaking seasonal heatwaves in the period 1979–2015 with ERA-INTERIM data interpolated to CORDEX AFR-44 for the most severe heatwaves since 1979. For each specific event the spatial extent is estimated as the land area fraction exceeding a fixed HWMId value. The area fraction is expressed in percentage. The HWMId peak is the highest spatial HWMId value recorded during each specific event. The values in bold are those of an unusual heat wave calculated as the maximum of each column as defined in section 3.1.

Date	HWMId Peak	Area (%) ≥3	Area (%) ≥6	Area (%) ≥9	Area (%) ≥15	Area (%) ≥24
1983 (MAM)	53.3	26.29	9.58	3.35	1.06	0.24
1987 (AMJ)	27.8	24.75	12.83	7.99	4.03	0.10
1988 (JJA)	19.0	19.39	4.99	1.52	0.24	0.00
1990 (OND)	38.8	12.07	5.19	3.02	1.29	0.55
1997–98 (DJF)	29.4	33.81	18.37	9.69	2.96	0.09
1998 (MAM)	28.7	32.96	11.41	4.82	0.46	0.05
2004–05 (DJF)	37.6	33.16	21.91	14.71	6.02	1.12
2008 (SON)	32.0	22.74	8.72	4.25	1.55	0.44
2009–10 (DJF)	41.5	55.84	42.83	31.73	11.04	1.71
2010 (AMJ)	30.0	35.90	14.96	5.50	0.43	0.05
2010 (ASO)	20.9	27.85	11.94	4.10	0.56	0.00
2011 (OND)	38.2	17.71	7.47	4.18	1.00	0.31
2012–13 (NDJ)	27.6	40.19	22.74	11.34	2.15	0.08
2012 (MJJ)	34.8	20.03	7.66	3.92	1.11	0.08
2015 (MAM)	27.6	26.36	13.62	7.61	2.51	0.16
2015 (JAS)	53.0	33.67	13.73	7.25	2.62	0.18
2015–16 (NDJ)	55.7	26.47	16.45	9.50	2.38	0.83
2010 Russia (ASO)	69.8	32.65	24.28	20.48	16.59	10.31
<b>UHW</b>	<b>57.0</b>	<b>55.84</b>	<b>42.83</b>	<b>31.73</b>	<b>11.04</b>	<b>1.71</b>

experiencing hotter and longer heat waves than those of the past decades.

Warming projections under a high emissions scenario (RCP8.5) indicate that extensive areas of Africa could exceed 2 °C of warming relative to the late 20th century annual mean temperature by the mid-21st century (figure 4(b)).

By 2025 ( $\pm 5$  years), when regional annual mean temperatures are expected to be 1 °C greater than that in the last two decades of the 20th century, the occurrence of heat waves with magnitude between 3 and 9 is expected to be more likely than in the period 1979–2015 (figures 4(a), S5–S7). The choice of scenario, i.e. RCP4.5 or RCP8.5, does not affect this result.

In the coming decade two out of 13 models simulated a percentage of area greater than that of a UHW for different level of magnitudes and across each season (figures 4(a), S5–S7). By 2045 ( $\pm 5$  years) the ensemble model median of the annual mean temperature shows a difference around 0.5 °C between the high (RCP8.5) and moderate (RCP4.5) scenarios (figure 4(b)). Under the high scenario 50% of the models project a percentage of area at each HWMId level greater than that of the UHW as defined in section 3.1 on regular basis, occurring across all seasons every year. By 2065 the same frequency of occurrence of UHWs is projected by 50% of the models under the moderate scenario (i.e. RCP4.5). Finally at the end of the century (by 2075  $\pm 5$  years), if mitigation policy has not been adopted, we can expect a very dramatic scenario with 50% of African land fraction

experiencing heat waves with magnitude greater than 15 on a regular basis (figures 4(a), S5–S7).

According to all models, by 2075 ( $\pm 5$  years) UHWs will become normal occurring 4 times in a year, at least once per season under the RCP8.5 scenario.

## 6. Conclusions

In this work we have investigated seasonal African heat waves that occurred since 1979 by using the seasonal HWMId. By applying the HWMId to reanalysis and IPCC AR5 Africa-CORDEX model output, we have shown a reasonable model performance in simulating present-day extreme heat waves. Further we show that anthropogenic increase in greenhouse gas concentrations have led to an increased probability of extreme heat waves in Africa already in the present.

Unusual heat waves could occur every year across all seasons already by the year 2045 under the most severe scenario. By the year 2045 the median of the model ensemble has reached a globally averaged near-surface temperature of 1.5 °C (see figure 4(b)) with respect to the reference period 1980–1989 (see figure 4(b)), which is the internationally negotiated climate target under the COP21 agreement, although relative to pre-industrial climate (<https://unfccc.int/resource/docs/2015/cop21/eng/l09r01.pdf>). Events of great severity, such as the 2009–2010 African heat waves, will become more likely already in the next decade. Note that only 1 out of 13 models was able to simulate this heat wave, which could be due to some model deficiency in simulating really extreme heat

waves or due to the length of the analyzed time period in the model simulations. Thus, the projections of the occurrence of extreme heat waves in the coming decade should be considered as conservative estimates.

By the end of the century, heat waves that are unusual under current climate will become very common along with rising global mean temperatures and could occur with a frequency of every season in any country in Africa. Given that adaptation and resilience measures presently undertaken in most African countries are already reaching their limits under current climate (IPCC 2014), the projected increase in extreme heat waves in the coming decades can result in humanitarian crises of unknown dimensions. Combined with prolonged drought conditions as currently experienced in Ethiopia (Climate Home 2016) that often co-occur with heat waves under *El Niño* conditions, will put further stress on humans and ecosystems in the affected regions, making some of them uninhabitable and forcing people to migrate. This calls for ambitious global mitigation action and sustainable solutions for local adaptation.

## Acknowledgments

We would like to thank ECMWF for providing ERA-Interim data. We acknowledge the Task Force for Regional Climate Downscaling (TFRCDD) of the World Climate Research Programme (WCRP), who created the CORDEX initiative to generate regional climate change projections for Africa within the timeline of the Fifth Assessment Report (AR5). JS is supported by ClimateXL (project no.243953) funded through the Norwegian Research Council.

## References

- Barriopedro D *et al* 2011 The Hot summer of 2010: redrawing the temperature record map of Europe *Science* **332** 220–4
- Christensen J H *et al* 2007 Regional climate projections *Climate Change 2007: The Physical Science Basis. Contribution of Working Group I to the Fourth Assessment Report of the Intergovernmental Panel on Climate Change* ed S Solomon *et al* (Cambridge: Cambridge University Press) pp 847–940
- Christensen J H *et al* 2013 *Climate Change 2013: The Physical Science Basis Contribution of Working Group I to the Fifth Assessment Report of the Intergovernmental Panel on Climate Change* ed T F Stocker *et al* (Cambridge: Cambridge University Press) ch 14, pp 1217–1308
- Christidis N, Gareth S J and Stott P A 2015 Dramatically increasing chance of extremely hot summers since the 2003 European heatwave *Nat. Clim. Change* **5** 46–50
- Christy J R, Norris W B and McNider R T 2009 Surface temperature variations in east Africa and possible causes *J. Clim.* **22** 3342–56
- Clark R T, Brown S J and Murphy J M 2006 Modeling northern hemisphere summer heat extreme changes and their uncertainties using a physics ensemble of climate sensitivity experiments *J. Clim.* **19** 4418–35
- Climate Home 2016 Drought has hit global cereal crops harder since 1980s *Press release* (<http://climatechangenews.com/2016/01/06/drought-has-hit-global-cereal-crops-harder-since-1980s/>)
- Collins J M 2011 Temperature variability over Africa *J. Clim.* **24** 3649–66
- Coumou D and Rahmstorf S 2012 A decade of weather extremes *Nat. Clim. Change* **2** 491496
- Dee D P *et al* 2011 The ERA-Interim reanalysis: configuration and performance of the data assimilation system *Q. J. R. Meteorol. Soc.* **137** 553597
- Fischer E, Beyerle U and Knutti R 2013 Robust spatially aggregated projections of climate extremes *Nat. Clim. Change* **3** 1033–8
- Fontaine B, Janicot S and Monerie P-A 2013 Recent changes in air temperature, heat waves occurrences, and atmospheric circulation in Northern Africa *J. Geophys. Res. Atmos.* **118** 85368552
- Funk C, Michaelsen J and Marshall M 2012 Mapping recent decadal climate variations in precipitation and temperature across Eastern Africa and the Sahel *Remote Sensing of Drought Innovative Monitoring Approaches* ed B D Wardlow *et al* (Boca Raton, FL: CRC Press) pp 331–58
- Gilleland E and Katz R W 2011 New software to analyze how extremes change over time *Eos* **92** 13–4
- Grab S and Craparo A 2011 Advance of apple and pear tree full bloom dates in response to climate change in the southwestern Cape, South Africa: 1973–2009 *Agric. Forest Meorol.* **151** 406–13
- Hoffman M T, Cramer M D, Gillson L and Wallace M 2011 Pan evaporation and wind run decline in the Cape Floristic Region of South Africa (1974–2005): implications for vegetation responses to climate change *Clim. Change* **109** 437–52
- Hulme M, Doherty R, Ngara T, New M and Lister D 2001 African climate change: 1900–2100 *Clim. Res.* **17** 145–68
- IPCC 2007 *Climate Change 2007: The Physical Science Basis. Contribution of Working Group I to the Fourth Assessment Report of the Intergovernmental Panel on Climate Change* ed S Solomon *et al* (Cambridge: Cambridge University Press) p 996
- IPCC 2012 *Managing the Risks of Extreme Events and Disasters to Advance Climate Change Adaptation. A Special Report of Working Groups I and II of the Intergovernmental Panel on Climate Change* ed C B Field *et al* (Cambridge: Cambridge University Press) p 52
- IPCC 2014 *Climate Change 2014: Impacts, Adaptation, and Vulnerability: B. Regional Aspects. Contribution of Working Group II to the Fifth Assessment Report of the Intergovernmental Panel on Climate Change* ed V R Barros *et al* (Cambridge: Cambridge University Press) p 88
- James R and Washington R 2013 Changes in African temperature and precipitation associated with degrees of global warming *Clim. Change* **117** 859–72
- Jones P D and Moberg A 2003 Hemispheric and large-scale surface air temperature variations: an extensive revision and an update to 2001 *J. Clim.* **16** 206–23
- Joshi M, Hawkins E, Sutton R, Lowe J and Frame D 2011 Projections of when temperature change will exceed 2 °C above pre-industrial levels *Nat. Clim. Change* **1** 407–12
- Kenyon J and Hegerl G C 2008 Influence of climate variability on global temperature extremes *J. Clim.* **21** 3872–89
- Kim J *et al* 2013 Evaluation of the CORDEX-Africa multi-RCM hindcast: systematic model errors *Clim. Dyn.* **42** 1189–202
- Kruger A C and Shongwe S 2004 Temperature trends in South Africa: 1960–2003 *Int. J. Climatol.* **24** 1929–45
- Lyon B 2009 Southern Africa summer drought and heat waves: observations and coupled model behavior *J. Clim.* **22** 6033–46
- Min S-K, Zhang X, Zwiers F W and Hegerl G C 2011 Human contribution to more-intense precipitation extremes *Nature* **470** 378381
- Mohamed A B 2011 Climate change risks in Sahelian Africa *Reg. Environ. Change* **11** (Suppl 1) 109–17
- Munich Re 2011 Topics Geo. Natural catastrophes 2010. Analyses, assessments, positions *Annual Munich Re report* ([www.preventionweb.net/files/17345\\_munichere.pdf](http://www.preventionweb.net/files/17345_munichere.pdf))

- New M *et al* 2006 Evidence of trends in daily climate extremes over southern and west Africa *J. Geophys. Res. Atmos.* **111** D14102
- Nicholson S E *et al* 2013 Temperature variability over Africa during the last 2000 years *Holocene* **23** 1085–94
- Patricola C M and Cook K H 2010 Northern African climate at the end of the twenty-first century: an integrated application of regional and global climate models *Clim. Dyn.* **35** 193–212
- Rosenzweig C *et al* 2007 Assessment of observed changes and responses in natural and managed systems *Climate Change 2007: Impacts, Adaptation and Vulnerability. Contribution of Working Group II to the Fourth Assessment Report of the Intergovernmental Panel on Climate Change* ed M L Parry *et al* (Cambridge: Cambridge University Press) pp 79–131
- Russo S, Sillmann J and Fischer E M 2015 Top ten European heat-waves since 1950 and their occurrence in the coming decades *Environ. Res. Lett.* **10** 124003
- Russo S *et al* 2014 Magnitude of extreme heat waves in present climate and their projection in a warming world *J. Geophys. Res.* **119** 12500–12
- Sanderson M G, Hemming D L and Betts R A 2011 Regional temperature and precipitation changes under high-end ( $\geq 4$  °C) global warming *Phil. Trans. R. Soc. A* **369** 85–98
- Schreck C J and Semazzi F H M 2004 Variability of the recent climate of eastern Africa *Int. J. Climatol.* **24** 681–701
- Seneviratne S I, Markus G D, Andy J P, Knutti R and Wilby R L 2016 Allowable CO<sub>2</sub> emissions based on regional and impact-related climate targets *Nature* **529** 477–83
- Stern D I *et al* 2011 Temperature and malaria trends in highland East Africa *PLoS One* **6** e24524
- Taylor K E, Stouffer R J and Meehl G A 2012 An overview of CMIP5 and the experiment design *Bull. Am. Meteorol. Soc.* **93** 485–98
- Trenberth K E *et al* 2007 Observations: surface and atmospheric climate change *Climate Change 2007: The Physical Science Basis. Contribution of Working Group I to the Fourth Assessment Report of the Intergovernmental Panel on Climate Change* ed S Solomon *et al* (Cambridge: Cambridge University Press) pp 236–336
- Vizy E K and Cook K H 2012 Mid-twenty-first-century changes in extreme events over northern and tropical Africa *J. Clim.* **25** 5748–67
- WMO (World Meteorological Organization) 2011 *WMO Statement on the Status of the Global Climate in 2010* (Geneva, Switzerland: WMO) no 1074
- WMO 2015 *WMO Statement on the Status of the Global Climate in 2015*
- Zampieri M, Russo S, Scoccimarro E, Michetti M, Di Sabatino S and Gualdi S 2016 Global assessment of heat waves magnitude from 1901 to 2010 and implications for the river discharge of the Alps *Sci. Total Environ.* submitted