

PAPER • OPEN ACCESS

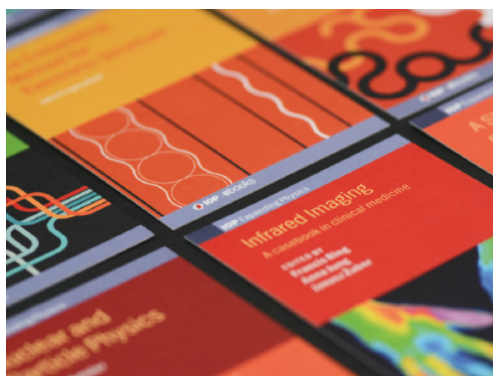
MRPC Telescope Simulation for the Extreme Energy Events Experiment

To cite this article: G. Mandaglio *et al* 2020 *J. Phys.: Conf. Ser.* **1561** 012015

View the [article online](#) for updates and enhancements.

Recent citations

- [A simulation tool for MRPC telescopes of the EEE project](#)
G. Mandaglio *et al*



IOP | ebooks™

Bringing together innovative digital publishing with leading authors from the global scientific community.

Start exploring the collection—download the first chapter of every title for free.

MRPC Telescope Simulation for the Extreme Energy Events Experiment

G. Mandaglio^{ab}, M. Abbrescia^{ac}, C. Avanzini^{ad}, L. Baldini^{ad},
 R. Baldini Ferroli^{ae}, G. Batignani^{ad}, M. Battaglieri^{af}, S. Boi^{ag},
 E. Bossini^{ah}, F. Carnesecchi^{ai}, C. Cicalò^{ag}, L. Cifarelli^{ai}, F. Coccetti^a,
 E. Coccia^{aj}, A. Corvaglia^{ak}, D. De Gruttola^{al}, S. De Pasquale^{al},
 F. Fabbri^{ae}, A. Fulci^b, L. Galante^{am}, P. Galeotti^{am}, M. Garbini^{ai},
 G. Gemme^{af}, I. Gnesi^{am}, S. Grazzi^a, D. Hatzifotiadou^{ain},
 P. La Rocca^{ao}, Z. Liu^{anp}, G. Maron^q, M. N. Mazziotta^{ar}, A. Mulliri^{ag},
 R. Nania^{ai}, F. Noferini^{ai}, F. Nozzoli^{as}, F. Palmonari^{ai}, M. Panareo^{ak},
 M. P. Panetta^{ak}, R. Paoletti^{ah}, C. Pellegrino^{ai}, L. Perasso^{af},
 C. Pinto^{ao}, G. Piragino^{am}, S. Pisano^{ae}, F. Riggi^{ao}, G. Righini^a,
 C. Ripoli^{al}, M. Rizzi^{ac}, G. Sartorelli^{ai}, E. Scapparone^{ai},
 M. Schioppa^{at}, A. Scribano^{ad}, M. Selvi^{ai}, G. Serri^{ag}, S. Squarcia^{af},
 M. Taiuti^{af}, G. Terreni^{ad}, A. Trifirò^{ab}, M. Trimarchi^{ab}, A.S. Triolo^b,
 C. Vistoli^q, L. Votano^{au}, M. C. S. Williams^{ain}, A. Zichichi^{ain},
 R. Zuyewski^{an}

^aMuseo Storico della Fisica e Centro Studi e Ricerche Enrico Fermi, Roma, Italy

^bINFN Sezione di Catania and Dipartimento di Scienze Matematiche e Informatiche, Scienze Fisiche e Scienze della Terra, Università di Messina, Messina, Italy

^cINFN and Dipartimento Interateneo di Fisica, Università di Bari, Bari, Italy

^dINFN and Dipartimento di Fisica, Università di Pisa, Pisa, Italy

^eINFN, Laboratori Nazionali di Frascati, Frascati (RM), Italy

^fINFN and Dipartimento di Fisica, Università di Genova, Genova, Italy

^gINFN and Dipartimento di Fisica, Università di Cagliari, Cagliari, Italy

^hINFN and Dipartimento di Fisica, Università di Siena, Siena, Italy

ⁱINFN and Dipartimento di Fisica, Università di Bologna, Bologna, Italy

^jINFN and Dipartimento di Fisica, Università di Roma Tor Vergata, Roma, Italy

^kINFN and Dipartimento di Matematica e Fisica, Università del Salento, Lecce, Italy

^lINFN and Dipartimento di Fisica, Università di Salerno, Salerno, Italy

^mINFN and Dipartimento di Fisica, Università di Torino, Torino, Italy

ⁿCERN, Geneva, Switzerland

^oINFN and Dipartimento di Fisica e Astronomia "E.Majorana", Università di Catania, Catania, Italy

^pICSC World laboratory, Geneva, Switzerland

^qINFN-CNAF, Bologna, Italy

^rINFN Sezione di Bari, Bari, Italy

^sTrento Institute for Fundamental Physics and Applications, Trento, Italy

^tINFN and Dipartimento di Fisica, Università della Calabria, Cosenza, Italy

^uINFN, Laboratori Nazionali del Gran Sasso, Assergi (AQ), Italy

E-mail: gmandaglio@unime.it

Abstract. A simulation tool based on GEMC framework to describe the MRPC telescope of the Extreme Energy Events (EEE) Project is presented. The EEE experiment is mainly



Content from this work may be used under the terms of the [Creative Commons Attribution 3.0 licence](https://creativecommons.org/licenses/by/3.0/). Any further distribution of this work must maintain attribution to the author(s) and the title of the work, journal citation and DOI.

devoted to the study of the secondary cosmic muons by using MRPC telescope distributed in high schools and research centres in Italy and at CERN. This takes into account the muon interactions with EEE telescopes and the structures surrounding the experimental apparatus; it consists of a dedicated event generator producing realistic muon distribution and a detailed geometry description of the detector. Microscopic behaviour of MRPCs has been included to produce experimental-like data. A method to estimate the chamber efficiency directly from data has been implemented and tested by comparing the experimental and simulated polar angle distribution of muons.

1. Introduction

The EEE experiment[1] is a “*Museo Storico della Fisica e Centro Studi e Ricerche Enrico Fermi*”[2] project carried on in collaboration with “*Istituto Nazionale di Fisica Nucleare*” (INFN) [3], and “*Ministero dell’Università, dell’Istruzione e della Ricerca*” (MIUR) and CERN[4]. The experiment consists of a network of 59 MRPC-based telescopes, distributed in the Italian High Schools, at CERN (two) and in five research centres of INFN, covering an area of about 0.3×10^6 km². The EEE activities are devoted to both educational and scientific purposes. The experiment has already collected more than 100 billion muon tracks offering a large scientific programme: the investigation of extensive air showers by looking for coincidences between different telescopes[5, 6], the investigation of Forbush decrease[7] and the monitoring of the building stability by combining the EEE telescope with other detectors[8] etc. To fully understand the data coming from telescopes installed in different places, a precise knowledge of the effect on the measurements of the different structures holding the detectors is needed; the different configuration, such as the distance between the MRPC chambers of a single telescope, must also be taken into account. For these reasons, we implemented a simulation tool, by using the GEMC (GEant4 MonteCarlo) framework, in order to be able to describe the behaviour of a single telescope working in different places and with different configuration setups, to estimate angular and absolute efficiency, and the absolute single muon rates.

2. The EEE Detectors and the Simulation Tool

Each EEE telescope consists of three Multigap Resistive Plate Chambers (MRPCs) with a 80×160 cm² active area, assembled in a stack with 50 cm distance between two MRPCs in the most common configuration (see picture of a telescope installed at “*INFN - Sezione di Catania*”, reported in figure 1). Each chamber is segmented by 24 copper strips (180 cm \times 2.5 cm spaced by 7 mm), which collect the charge signals produced in the gas (mixture of C₂F₄H₂ (98%) and SF₆ (2%)) of the chamber by the crossing of charged particles. The chamber configuration provides us two-dimensional information: one is given by the coordinate of the strip giving signal or, in the case of contiguous strips by averaging their positions, while the other one is obtained by the time difference of the signals at the opposite edges of the strip (measured using TDCs with 100ps resolution). Detailed description of the detector is reported in the paper by P. La Rocca et al. published in the same review volume as the present paper [9].

2.1. Event Generator

The model described in Ref.[10] has been used to generate the single-muon distribution. The azimuthal distribution of muons is considered to be uniform, while the polar angle distribution (angle with respect to the Zenith) is taken from an improved Gaisser-like parametrization (see Ref. [10]) that includes Earth curvature at all latitudes and low energy muons ($E_\mu < 100$ GeV/c). The flux, as a function of muon energy E_μ and θ_μ is given by:

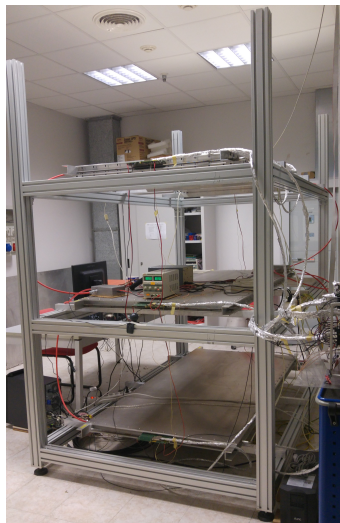


Figure 1. Telescope operating at “INFN - Sezione di Catania” (Italy).

$$\frac{dI_\mu}{dE_\mu} = 0.14 \left[\frac{E_\mu}{GeV} \left(1 + \frac{3.64 GeV}{E_\mu (\cos(\theta^*))^{1.29}} \right) \right]^{-2.7} \left[\frac{1}{1 + \frac{1.1 E_\mu \cos\theta^*}{115 GeV}} \right] + \left[\frac{0.054}{1 + \frac{1.1 E_\mu \cos\theta^*}{850 GeV}} \right] \quad (1)$$

where

$$\cos\theta^* = 0.14 \sqrt{\frac{(\cos\theta)^2 + P_1^2 + P_2(\cos\theta)^{P_3} + P_4(\cos\theta)^{P_5}}{1 + P_1^2 + P_2 + P_4}} \quad (2)$$

and the used parameters $P_1 - P_5$ are 0.102573, -0.068287, 0.958633, 0.040725, 0.817285, respectively. The parametrization is able to reproduce well the existing measurements, see Fig. 2 of Ref. [10]. The absolute muon flux normalization of $1.06 \text{ cm}^{-2} \text{ min}^{-1}$, used in the simulation, is the one reported in the PDG [11]. Finally, the generated muons were processed by GEMC to record the simulated interaction with the EEE telescope and to derive the expected angular distribution of single-track events and the absolute rate.

2.2. GEMC (GEANT4-library-based interface)

This simulation tool is based on the GEMC [12] framework providing user-defined geometry and hit description. Detector and building structures are implemented by using the standard GEANT volume description. The program handles multiple input/output format and provides a graphical interface to visualize the detector and the hits in active and passive volumes (see figure 2).

The MRPC response was parametrized based upon the measured performance of the chambers [13]. In particular, the algorithm that mimics the avalanche propagation in the gas is effectively described by a cone with the vertex generated by the particle interaction in the upper layer of the chamber and that develops downwards to the bottom one. In the simulation, the three chambers in the most common configuration are placed in a concrete wall box with variable thickness mimicking the room where the real telescope is located. Of course, more complicated geometries of the surrounding space can be implemented.

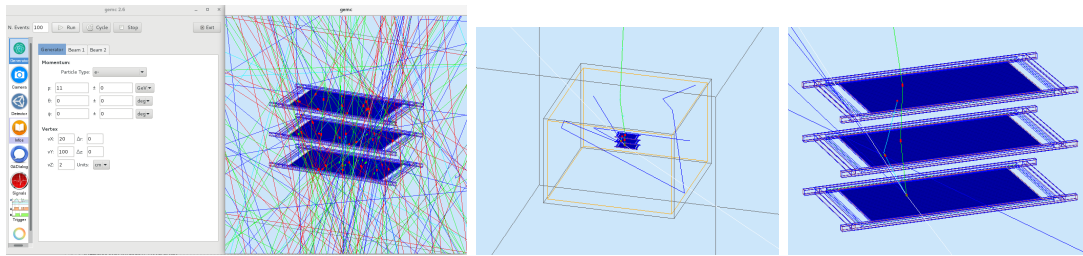


Figure 2. GEMC graphical interface (left panel); details of a muon interaction with the structure of the room (box of 30 cm thick concrete) hosting the detector (center panel) and a zoom on the telescope (right panel).

The information generated by GEMC and necessary to reconstruct the muon track is: the total number of hits for each chamber (at least one); the coordinates of the strips that give signals; the signal time from the generation point to the edge of the chamber. By using this information the reconstruction program is able to write data in the experimental format.

3. Efficiency Estimation and Experimental-Simulated Data Comparison

In order to compare the simulated and experimental data, we calculate the efficiency of a telescope of the network (TORI-03), selected for its stable working condition. We mapped each chamber by dividing it in 24×20 ($X \times Y$ directions) sectors, and then we estimated for each bidimensional interval the tracking efficiency and the counting efficiency, assuming no correlation between the two quantities.

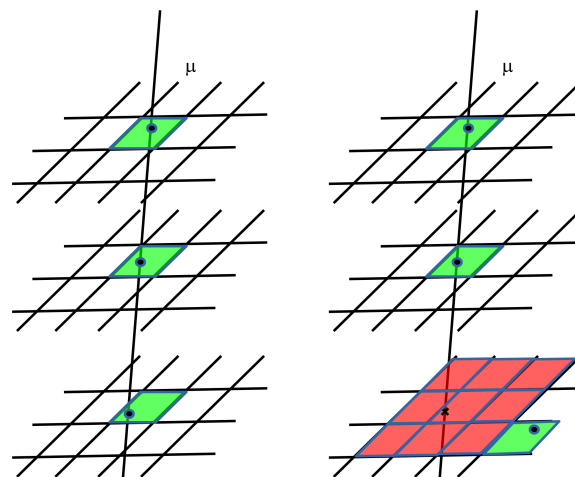


Figure 3. Scheme of good coincidence with all hits in the interval area of chamber intercepted by the muon track (left) and the case of a missing hit (right); in green the areas having a detected hit.

We define the tracking efficiency as the ratio between the map of the missing hits (geometrical position belonging to a sector of a chamber crossed by a track reconstructed by using the information provided by the other two chambers) and the map of the good hits (hits belonging to sectors of chambers crossed by tracks reconstructed by using information of all chambers). The cases of missing hit and the good hit are showed in the scheme in figure 3.

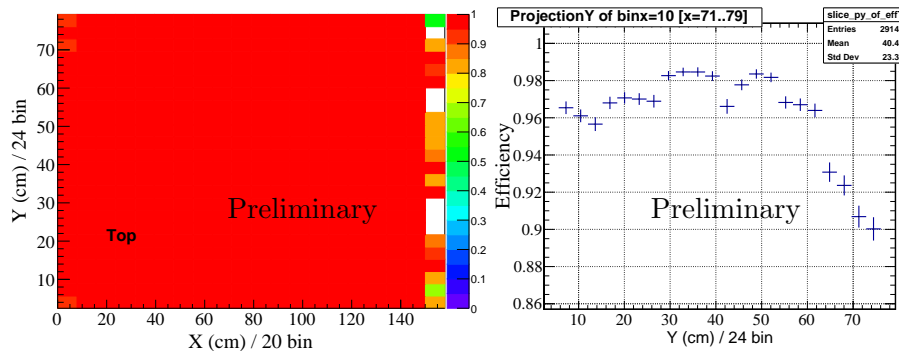


Figure 4. Tracking efficiency map of top chamber (left) and projection of the map with respect to the X axis (right) for TORI-03 telescope.

The tracking efficiency for the top chamber of TORI-03 telescope is reported as an example in figure 4. By looking at the projection of the efficiency map reported in the right panel of figure 4, the used algorithm estimates an efficiency higher than 90% and close to 98% in the central region of the chamber in the analysed data sample.

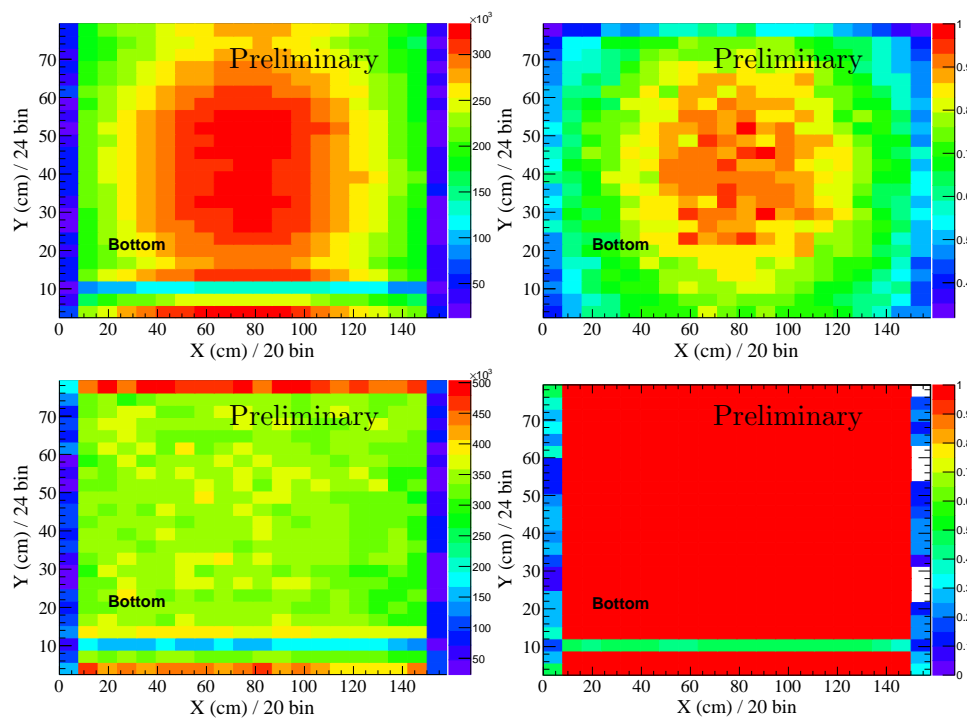


Figure 5. Experimental hit map of bottom chamber (top-left) of TORI-03 telescope, simulated hit map normalized to the maximum rate (top-right); the ratio between the top-left and top-right maps (bottom-left); the bottom-right map normalized to the average of rate of the bins in the center of the chamber (bottom-right).

The counting efficiency is obtained according to the following procedure:

- 1) we compute the map of hit without any constraints (see Fig. 5 top-left);
- 2) we estimate the hit distribution of simulated events (no efficiency information used in the

simulation) normalized to the maximum bin rate (see Fig. 5 top-right);

3) we remove the effect on hit distribution due to detector acceptance by dividing the map of hit distribution 1) to the map obtained as described in 2), obtaining a flat rate distribution (see Fig. 5 bottom-left);

4) finally, we normalize the map resulting from procedure 3) to the average of bins with relative maximum rates computed in the center of chamber to avoid unwanted unstable behaviour at the edges of the detector (bottom-left).

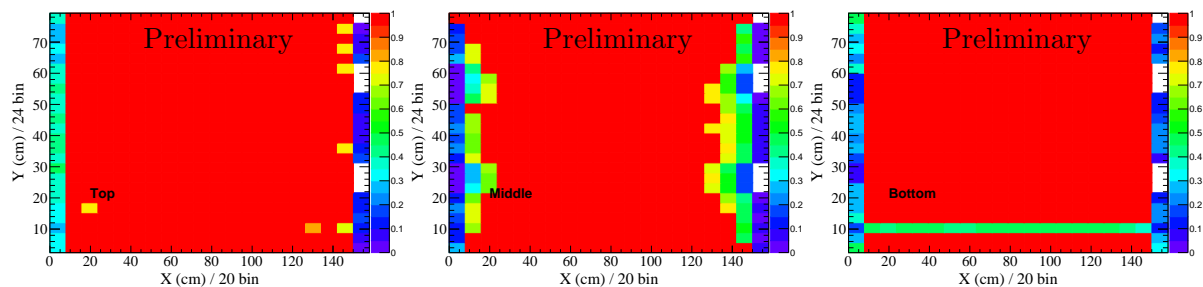


Figure 6. Global efficiency map for top, middle and bottom chamber of TORI-03 telescope.

The global efficiency map, for each chamber, is obtained as the product of the tracking and counting efficiency maps of the same chamber. The global efficiency of the three chambers of the TORI-03 telescope are reported in figure 6 and these maps have been used to correct the polar angle distribution of simulated events. By looking the maps reported in figure 6, it is evident as this procedure is able to identify the inefficiency at the edges of the middle chamber along the X direction, probably due to local gas leak, and the inefficiency of a strip in the bottom chamber.

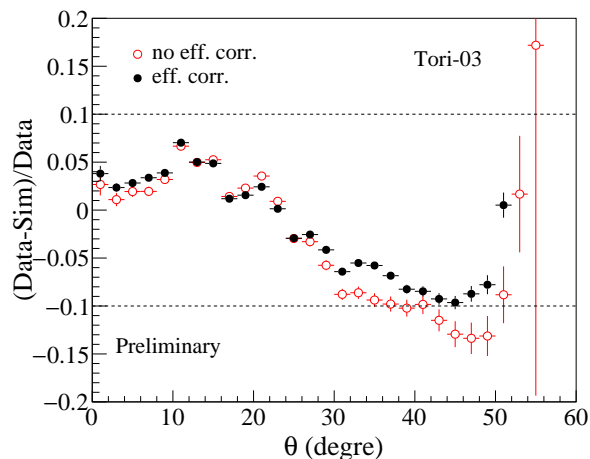


Figure 7. Ratio between the experimental and simulated polar angle distributions with efficiency corrections (full circles) and without (open circles).

In figure 7, we report the ratio between experimental and simulated polar angle distribution with and without efficiency correction. The efficiency corrections derived from data are able to improve the experimental-simulation agreement within 10% in the whole polar angle acceptance of the EEE telescope; further investigations are in progress to improve the description of our detector in the simulation tool. The improvement of the experimental-simulation agreement at

large angle proves the reliability of the procedure to extract the efficiency maps of the chambers of the telescope by using the experimental data.

4. Conclusion

In this work we present a simulation tool based on GEMC developed to describe the MRPC telescope of the EEE experiment[1, 2]. This simulation code provides an event generation implemented by using an improved version of the Gaisser parametrization of cosmic muon flux as a function of muon energy and momentum[10]. Moreover, this tool is able to describe the single telescope behaviour reproducing an important quantity such as the muon polar angle direction with a precision of 10% in the whole detector acceptance. A procedure to estimate the efficiency map of telescope derived directly from data has been presented and its reliability has been proved by comparing experimental and simulated data. The code is ready to be used with different event generators, like Corsika [14], in order to investigate the extensive cosmic rays showers.

References

- [1] EEE Project web site: <https://eee.centrofermi.it>
- [2] Centro Fermi web site: <http://www.centrofermi.it/>
- [3] INFN web site: <http://home.infn.it/it/>
- [4] CERN web site: <https://home.cern/>
- [5] Abbrescia M *et al.* *Eur. Phys. J. Plus* **133** 34
- [6] La Rocca P *et al.* 2019 *Nucl. and Part. Phys. Proc.* **306-308** 175
- [7] Abbrescia M *et al.* 2015 *PoS(ICRC2015)097*
- [8] Abbrescia M *et al.* 2019 *JINST 14(2019)P06035*
- [9] La Rocca P *et al.* 2020 “*Scientific and educational aspects of the EEE Project*”, this volume of Journ. Phys: Conf. Series
- [10] Mengyun Guan *et al.*, arXiv:1509.06176
- [11] Tanabashi M *et al.* 2018 *Phys. Rev. D* **98** 030001
- [12] GEMC website: <https://gemc.jlab.org/gemc/html/index.html/>
- [13] Abbrescia M *et al.* 2018 *JINST 13 P08026*
- [14] CORSIKA website: <https://www.ikp.kit.edu/corsika/70.php>