



The insulin-degrading enzyme as a link between insulin and neuropeptides metabolism

Dorota Waławczyk , Jerzy Silberring & Giuseppe Grasso

To cite this article: Dorota Waławczyk , Jerzy Silberring & Giuseppe Grasso (2021) The insulin-degrading enzyme as a link between insulin and neuropeptides metabolism, Journal of Enzyme Inhibition and Medicinal Chemistry, 36:1, 183-187, DOI: [10.1080/14756366.2020.1850712](https://doi.org/10.1080/14756366.2020.1850712)

To link to this article: <https://doi.org/10.1080/14756366.2020.1850712>



© 2020 The Author(s). Published by Informa UK Limited, trading as Taylor & Francis Group.



Published online: 05 Jan 2021.



Submit your article to this journal [↗](#)



View related articles [↗](#)



View Crossmark data [↗](#)

RESEARCH PAPER



The insulin-degrading enzyme as a link between insulin and neuropeptides metabolism

Dorota Waclawczyk^a, Jerzy Silberring^a and Giuseppe Grasso^b

^aDepartment of Biochemistry and Neurobiology, AGH University of Science and Technology, Krakow, Poland; ^bDepartment of Chemical Sciences, University of Catania, Catania, Italy

ABSTRACT

We have applied a recently developed HPLC-MS enzymatic assay to investigate the cryptic peptides generated by the action of the insulin-degrading enzyme (IDE) on some neuropeptides (NPs) involved in the development of tolerance and dependence to opioids. Particularly, the tested NPs are generated from the NPFF precursor (pro-NPFF (A)): NPFF (FLFQPQRF) and NPAF (AGEGLSSPFWSLAAPQRF). The results show that IDE is able to cleave NPFF and NPAF, generating specific cryptic peptides. As IDE is also responsible for the processing of many other peptides in the brain (amyloid beta protein among the others), we have also performed competitive degradation assays using mixtures of insulin and the above mentioned NPs. Data show that insulin is able to slow down the degradation of both NPs tested, whereas, surprisingly, NPAF is able to accelerate insulin degradation, hinting IDE as the possible link responsible of the mutual influence between insulin and NPs metabolism.

ARTICLE HISTORY

Received 28 September 2020
Revised 8 November 2020
Accepted 9 November 2020

KEYWORDS

Insulin-degrading enzyme; neuropeptides; diabetes; opioids

1. Introduction

Cryptic peptides are bioactive amino acid sequences hidden in a precursor protein, which are formed and released when a peptidase cleaves the parent protein at specific cleavage sites¹. Some cryptic peptides are present also in the brain (neuropeptides, NPs), where they play an important role in the modulation of various processes, such as neuronal signalling, angiogenesis, inflammatory response, immune response, and cell growth². Cryptic peptides may have biological properties and activities that are distinct from their parent proteins^{3,4}.



Opioids are involved in the physiological control of numerous functions of the central nervous system. On the other side, some endogenous NPs, called anti-opioids, participate in the homeostatic system and have the function to contradict the effects of opioids^{5,6}. Particularly, some NPs are generated from the NPFF precursor (pro-NPFF(A)): the NPFF (FLFQPQRF) and the NPAF (AGEGLSSPFWSLAAPQRF), also known as morphine-modulating species. They are members of the FMRF-amide family, which is the largest and most diverse family of NPs known. All peptides are sharing the C-terminal-RF amide sequence⁷ but their mechanism of action is largely unknown. AF and FF peptides can oppose the acute effects of opioids and their elevated concentrations in the brain may be responsible for the development of tolerance and dependence to opioids. Indeed, NPAF and NPFF lower the nociceptive threshold, attenuate morphine analgesia, inhibit stimulated insulin and somatostatin release from the pancreas, exert anorectic properties, inhibit colonic bead expulsion time, regulate body temperature, increase mean arterial blood pressure, control aldosterone release and adrenal blood supply⁸. In addition, they have a large impact also on energy homeostasis by regulating

appetite and energy expenditure⁹, demonstrating an important link between RFamide peptides and insulin metabolism^{10–12}. We have recently demonstrated that insulin-degrading enzyme (IDE) is able to degrade specific amino acid sequences present in the NP pro-NPFFA, generating some cryptic peptides¹. It is possible that NPs involved in pain transmission may be partly responsible for the regulation of IDE or IDE indirectly participates in neural communication of pain signals¹³. Intracellular interactions of insulin with IDE may be involved in insulin control of cellular protein degradation and fat oxidation^{14–17}. Broad specificity for peptide substrates^{18–20} and its ubiquitous localisation make IDE potentially available for a variety of biomolecular process involved in homeostatic and pathological conditions^{21,22}.

In this scenario, we have applied a recently developed HPLC-MS method²³ to study the degradation of NPFF and NPAF by IDE, identifying cleavage sites and generated cryptic peptides. Afterwards, we have investigated how NPs and insulin degradation by IDE affect each other and the results hint that the control of IDE activity by allosteric mechanisms could represent a possible link between insulin metabolism and neuronal communication.

2. Materials and methods

IDE, His-Tag, rat, recombinant, *Spodoptera frugiperda*, were purchased from Sigma Aldrich. NPAF, NPFF were manually synthesised by the solid-phase method using Fmoc chemistry. Peptides were purified by the high-performance liquid chromatography (HPLC) and tested for their purity using ESI MS. Purity was above 95%. Human insulin, phosphate buffer solution (PBS), trifluoroacetic acid (TFA), acetonitrile (C₂H₃N) were purchased from Sigma-Aldrich. The liquid chromatography-electrospray ionisation mass

CONTACT Giuseppe Grasso  grassog@unict.it  Department of Chemical Sciences, University of Catania, Catania, Italy
This article has been republished with minor changes. These changes do not impact the academic content of the article.

© 2020 The Author(s). Published by Informa UK Limited, trading as Taylor & Francis Group.

This is an Open Access article distributed under the terms of the Creative Commons Attribution License (<http://creativecommons.org/licenses/by/4.0/>), which permits unrestricted use, distribution, and reproduction in any medium, provided the original work is properly cited.

spectrometry (LC-ESI/MS) experiments were carried out by using a LCQ Deca XP instrument (Thermo Electron Corporation, USA). All solutions were incubated in PBS (pH 7.4) at 37°C. After incubations, sample aliquots at time 0; 10; 30; 45; 60 and 180 min were taken and a 10% solution of TFA was added to the aliquots in order to achieve a final TFA concentration of 1% in all the samples to stop the enzymatic reaction. Samples were kept at 4°C before HPLC-MS analysis. NPAF or NPFF (20 µM) were incubated with IDE (135 nM), while the concentration of insulin, when used, was 10 µM. In order to assess the effect of NPAF and NPFF fragments on insulin degradation, the peptides were incubated for three hours with IDE and then insulin (10 µM) was added to the reaction mixture. Separation of the generated fragments was carried out by the reversed-phase chromatography using a Jupiter® 5 µm C4 300 Å (LC Column 150 × 4.6 mm) column from Phenomenex at the flow rate of 250 µl/min. MS-MS experiments were used for final identification of the peptide fragments. All methodological details and a semiquantitative method were already described in our previous work, and the absolute intensities of the peaks were normalised to the total ion current^{18,24,25}. The experiments were repeated three times to ensure reproducibility and estimate the error bars on the HPLC-MS results.

3. Results and discussion

In Figure 1, the amino acidic sequences of NPAF and NPFF are reported with arrows indicated the observed IDE cleavage sites, while in Table 1 the assignment of all the peaks detected is also shown. Only the most intense peaks were considered to assess the time courses for the peptides degradation by IDE (Figures 2 and 3). The relative intensity of cryptic peptide at 1617.8 m/z for NPAF reaches a maximum after about 30 min of incubation of NPAF with IDE and diminishes its abundance after that time. This trend is easily explained by considering that IDE cleaves peptides in a sequential manner²⁰, and therefore longer peptides can be further degraded into shorter fragments by the enzyme soon after their formation. These results clearly demonstrate that IDE is able to cleave both peptides and the observed cleavage sites (Figure 1) are in accordance with the observation that IDE exhibits some preference for basic (Arg) or large hydrophobic (Phe, Leu, Tyr) amino acids at the carboxyl side of the cleavage site²⁶.

Once the degradation of the two peptides by IDE was assessed, the next question that needed a more thorough explanation was

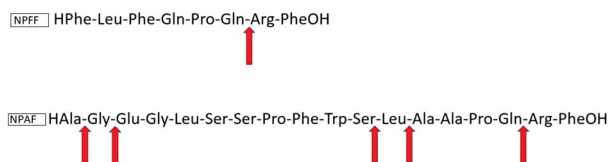


Figure 1. NPFF and NPAF amino acidic sequence. Arrows indicate IDE cleavage sites.

how this enzymatic activity affects/is affected by insulin degradation. The latter has been already well characterised in our previous reports^{13,14,20} and here we investigated only how the presence of insulin in the incubation mixture affects NPFF and NPAF degradation, and how NPFF and NPAF and their fragments affect insulin degradation by IDE. In order to elucidate the first point, that is how insulin affects NPFF and NPAF degradation, we co-incubated insulin, IDE and NPFF or NPAF together and studied the time courses of the cryptic peptides which are formed. In Figures 4 and 5, the results for NPFF and NPAF are reported, respectively. Strikingly, insulin has a very different effect on the degradation of the two peptides by IDE. Indeed, insulin does not alter NPAF degradation by IDE at short times of incubation, having an inhibitory effect on the peptide degradation only after several minutes of co-incubation. Considering that insulin degradation and the formation of insulin fragments by IDE are very quick at these experimental conditions²⁰, the observed results can be explained by assuming that the insulin fragments, rather than the full-length hormone, exert an inhibitory effect on NPAF degradation by IDE. On the contrary, insulin inhibitory effect observed in the case of NPFF at very short incubation times indicates that, in this case, it is the full-length insulin, which is slowing down the peptide degradation, whereas the insulin fragments have little effect on IDE degrading activity towards NPFF. For a peptide to be degraded by IDE, the former must bind to the enzyme, access its catalytic site containing a zinc ion, form an intermediate complex, and finally fragments will be released. If there are more than one IDE substrates in solution (as in our case with the coexistence of insulin and the NPs), it is conceivable that IDE will degrade first and more quickly the peptides which have a higher binding affinity for the enzyme. We have already reported that longer NPs have higher affinity for IDE than shorter ones¹ and NPFF is much shorter than NPAF (Figure 1). From this perspective, our different results on the inhibitory role of insulin on cleavage of the two peptides can be easily explained by assuming that, also in this case, NPFF has lower affinity for the enzyme. Therefore, in a solution containing insulin and NPFF, IDE will first bind and degrade insulin. Longer incubation times will be needed for IDE to degrade appreciably the NPFF present in solution with the insulin. On the contrary, the larger dimensions of NPAF make this peptide a more suitable candidate to bind IDE competitively also in the presence of insulin, therefore, when NPAF and insulin coexist in solution, IDE cleaves both very efficiently. Of course, as time goes by and the solution becomes rich of insulin and peptide fragments, a competition for the occupation of the enzyme catalytic site occurs and a decrease of NPAF degradation at longer incubation time is observed (Figure 4).

A further insight into the reciprocal effect that insulin and the NPs have on IDE proteolytic activity can be obtained by following insulin degradation by IDE in the presence of the NPs. In Figure 6, the relative intensities of the insulin molecular peak as a function of time is plotted for solutions containing IDE and insulin or a mixture of IDE, insulin and the NPs. In this case, although the curves are all very similar to each other, a small but reproducible

Table 1. Assignment of the peaks observed by ESI-MS for the digestion of NPFF and NPAF solutions by IDE.

Peptide	RT [min]	Calculated (m/z)	Experimental (m/z)	Sequence
NPFF	25.6	779.4	779.3	HPhe-Leu-Phe-Gln-Pro-GlnOH
	26	1082.6	1082.5	HPhe-Leu-Phe-Gln-Pro-Gln-Arg-PheOH
NPAF	25.9	1137.5	1137.3	HAla-Gly-Glu-Gly-Leu-Ser-Ser-Pro-Phe-Trp-SerOH
	26.7	1617.8	1617.8	HAla-Gly-Glu-Gly-Leu-Ser-Ser-Pro-Phe-Trp-Ser-Leu-Ala-Ala-Pro-GlnOH
	26.8	1663.8	1663.7	HGly-Leu-Ser-Ser-Pro-Phe-Trp-Ser-Leu-Ala-Ala-Pro-Gln-Arg-PheOH
	27.0	1920.9	1921.0	HAla-Gly-Glu-Gly-Leu-Ser-Ser-Pro-Phe-Trp-Ser-Leu-Ala-Ala-Pro-Gln-Arg-PheOH
	27.3	1489.7	1489.8	HGlu-Gly-Leu-Ser-Ser-Pro-Phe-Trp-Ser-Leu-Ala-Ala-Pro-GlnOH
	27.6	1250.6	1250.5	HAla-Gly-Glu-Gly-Leu-Ser-Ser-Pro-Phe-Trp-Ser-LeuOH

The most intense peaks, used for assessing the kinetics of peptide degradation, are in bold.

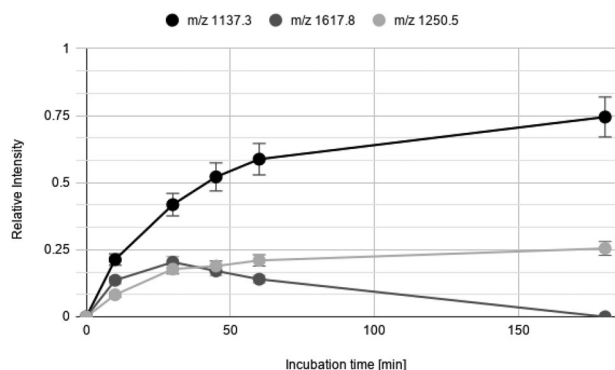


Figure 2. Time courses for the NPAF cryptides formed from the degradation of the NPAF peptide by IDE.

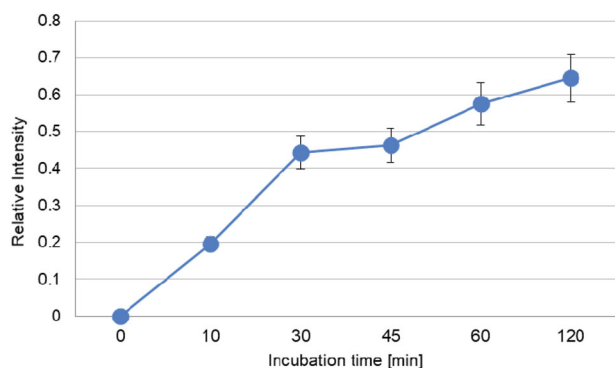


Figure 3. Time courses for the NPFF cryptides at m/z 779.3 formed from the degradation of the NPFF peptide by IDE.

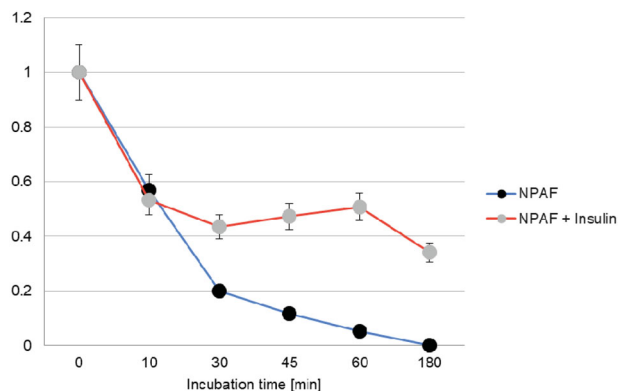


Figure 4. Time course for the NPAF molecular peak decrease observed when the peptide is degraded by IDE in the presence or in the absence of insulin.

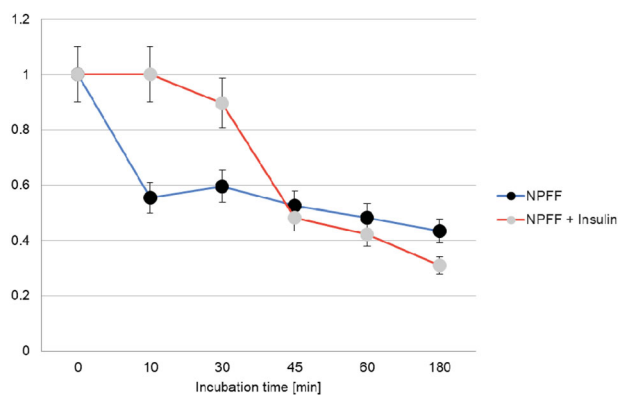


Figure 5. Time course for the NPFF molecular peak decrease observed when the peptide is degraded by IDE in the presence or in the absence of insulin.

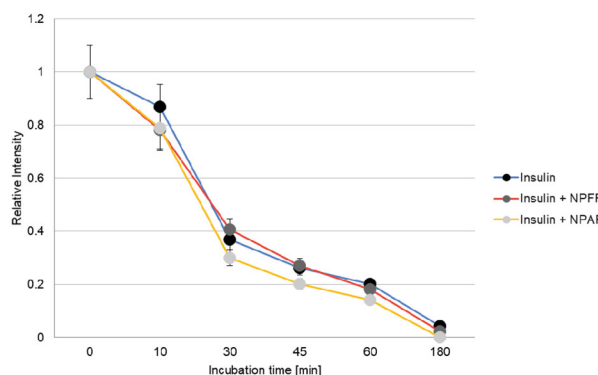


Figure 6. Time course for the insulin molecular peak decrease observed when the hormone is degraded by IDE in the presence or in the absence of NPAF/NPFF.

(experiments were performed three times) activating effect for NPAF on insulin degradation by IDE is observed (faster degradation of the intact insulin). It is well known that small molecules and peptides can be activators of IDE through their binding to allosteric sites^{27,28} and our results indicate that NPAF but not NPFF can be an IDE activator as well as a substrate. In addition, we performed experiments co-incubating IDE and NPs for 3 h prior the addition of insulin, in order to see if the small activation effect observed in the case of NPAF can be attributed to the full-length peptide or to an IDE generated cryptide. We observed no activation effect in this case as all the curves recorded (incubation for 3 h of IDE with and without NPAF/NPFF and then addition of insulin) are superimposable (data not shown). This means that the small activation effect observed in the case of NPAF is due to the full-length peptide and not to any of its IDE produced cryptides.

In order to see if the NPAF small activatory effect on insulin degradation by IDE is site specific, and therefore leads to an increase in the amount of specific insulin cryptides rather than to an overall aspecific increase of insulin degradation, we have monitored the relative intensities of all the insulin fragments versus time of incubation²³. This investigation is important because specific insulin fragments can have different biological activities *in vivo*¹⁴. In Figure 7, the time courses of the most intense IDE produced insulin fragments are reported, for solutions containing IDE and insulin with and without NPAF. It is shown that for some insulin fragments [A(14–21) B(14–24), A(1–14) B(14–30) and A(1–14) B(14–25), see Table 2] the detected time courses are evidently altered in the presence of NPAF, while others remain unaffected. Particularly, the analysis of the fragments whose abundance is increased by the presence of NPAF, indicates that the latter increases IDE activity towards insulin in a site-specific manner, favouring the action of the enzyme mainly at the B13–14 insulin cleavage site. This result hints that the interaction of IDE with NPAF somehow must modify the binding of insulin with the enzyme, so that the latter increases its catalytic activity towards a specific portion of the insulin amino acid sequence.

4. Conclusions and future perspectives

We have investigated the degrading activity of IDE for some NPs, which have been demonstrated to lower the nociceptive threshold, functioning as anti-opioids, as well as inhibiting insulin release from the pancreas. The reported results clearly indicate that IDE is

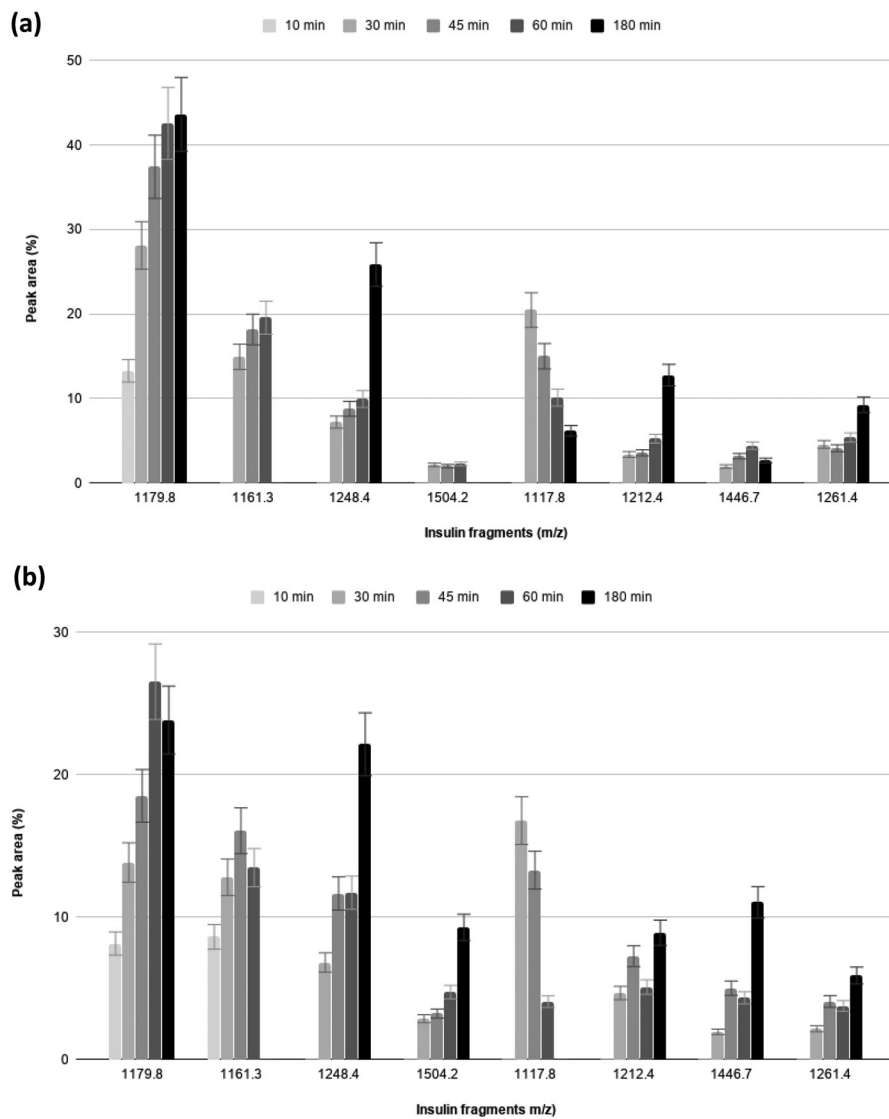


Figure 7. Hydrolytic patterns of time-courses insulin degradation by IDE in the absence (a) and in the presence (b) of NPAF.

Table 2. Assignment of the peaks observed by ESI-MS for the digestion of insulin solutions by IDE.

Detected insulin fragments	Calculated monoisotopic peaks (<i>m/z</i>)	Experimental monoisotopic peaks (<i>m/z</i>)
A(1–13) B(1–9)	1179.8	1179.3
A(1–14) B(1–9)	1261.4	1261.4
A(14–21) B(14–24)	1504.2	1504.5
A(1–13) B(1–10)	1248.4	1248.8
A(1–13) B(17–24)	1117.8	1117.5
A(1–14) B(14–30)	1161.3	1161.8
A(1–13) B(17–25)	1212.4	1212.8
A(1–14) B(14–25)	1446.7	1447.0

The fragments generated by IDE whose relative abundance increases in the presence of NPAF are indicated in bold. Discussion is in the text.

capable of degrading both NPAF and NPDF at specific cleavage sites. Moreover, our results indicate that the degradation of the two NPs is differently affected by the presence of insulin. Indeed, while NPDF degradation is slowed down by the presence of the full-length insulin, the degradation of the longer NPAF is unaffected by the presence of the intact hormone, whereas generation of shorter insulin fragments produced by the action of IDE is responsible for the inhibition of the NPs degradation at longer incubation times. We explain this difference in the inhibitory role

of insulin towards the two NPs by considering their different length, and thus structure, which very likely is the cause of a different affinity for the enzyme. An SPR investigation to confirm such hypothesis will be the subject of future work.

Finally, we have also demonstrated that NPAF, but not NPDF, plays an activatory role on the degradation of insulin by IDE in a site-specific manner, favouring the action of the enzyme mainly at the B13–14 insulin cleavage site. Once again, this result demonstrates the pivotal role of IDE in the interplay between NPs and insulin metabolism, giving a molecular insight into the link between type 2 or type 1 diabetes and pain transmission and pain threshold^{13,29}.

Disclosure statement

No potential conflict of interest was reported by the author(s).

Funding

The financial support from the Università degli Studi di Catania [fondi di ateneo 2020-2022, Università di Catania, linea Open Access] is gratefully acknowledged. This work was partially

supported by the grant from the National Centre for Research and Development Poland, HEMO for the Polish-Taiwanese collaboration [No. PL-TW/V/2017/17]. Expenditures were also financed by the Polish Ministry of Science and Education [the subsidy no 16.16.160.557].

References

- Grasso G, Mielczarek P, Niedziolka M, et al. Metabolism of cryptic peptides derived from neuropeptide FF precursors: the involvement of insulin-degrading enzyme. *Int J Mol Sci* 2014;15:16787–99.
- Ner J, Kotlinska JH, Silberring J. Crypteins – an overlooked piece of peptide systems. *Curr Protein Pept Sci* 2015;16: 203–18.
- Kotlinska JH, Gibula-Bruzda E, Suder P, et al. Crypteins derived from the mouse neuropeptide FF (NPFF)A precursor display NPFF-like effects in nociceptive tests in mice. *Peptides* 2012;36:17–22.
- Ueki N, Someya K, Matsuo Y, et al. Cryptides: functional cryptic peptides hidden in protein structures. *Biopolymers* 2007;88:190–8.
- Mollereau C, Roumy M, Zajac J-M. Opioid-modulating peptides: mechanisms of action. *Curr Top Med Chem* 2005;5: 341–55.
- Vilim FS, Aarnisalo AA, Nieminen ML, et al. Gene for pain modulatory neuropeptide NPFF: induction in spinal cord by noxious stimuli. *Mol Pharmacol* 1999;55:804–11.
- Panula P, Kalso E, Nieminen M, et al. Neuropeptide FF and modulation of pain. *Brain Res* 1999;848:191–6.
- Roumy M, Zajac JM. Neuropeptide FF, pain and analgesia. *Eur J Pharmacol* 1998;345:1–11.
- Moriya R, Sano H, Umeda T, et al. RFamide peptide QRFP43 causes obesity with hyperphagia and reduced thermogenesis in mice. *Endocrinology* 2006;147:2916–22.
- Dockray GJ. The expanding family of -RFamide peptides and their effects on feeding behaviour. *Exp Physiol* 2004;89: 229–35.
- Ip CK, Zhang L, Farzi A, et al. Amygdala NPY Circuits Promote the Development of Accelerated Obesity under Chronic Stress Conditions. *Cell Metab* 2019;30:111–28.e6.
- Patel SK, Singh SK. Role of pyroglutamylated RFamide peptide43 in germ cell dynamics in mice testes in relation to energy metabolism. *Biochimie* 2020;175:146–58.
- Zingale GA, Bellia F, Ahmed IMM, et al. IDE degrades nociceptin/orphanin FQ through an insulin regulated mechanism. *Int J Mol Sci* 2019;20:4447.
- Bellia F, Pietropaolo A, Grasso G. Formation of insulin fragments by insulin-degrading enzyme: the role of zinc(II) and cystine bridges. *J Mass Spectrom* 2013;48:135–40.
- Duckworth WC, Fawcett J, Tsui BT, et al. Biological activity of a fragment of insulin. *Biochem Biophys Res Commun* 2004;318:1019–24.
- Grasso G. The insulin-degrading enzyme is an allosteric modulator of the 20S proteasome and a potential competitor of the 19S. *Cell Mol Life Sci* 2018;75:3441–56.
- Grasso G, Lanza V, Malgieri G, et al. The insulin degrading enzyme activates ubiquitin and promotes the formation of K48 and K63 diubiquitin. *Chem Commun (Camb)* 2015;51: 15724–7.
- Bellia F, Grasso G. The role of copper(II) and zinc(II) in the degradation of human and murine IAPP by insulin-degrading enzyme. *J Mass Spectrom* 2014;49:274–9.
- Ciaccio C, Tundo GR, Grasso G, et al. Somatostatin: a novel substrate and a modulator of insulin-degrading enzyme activity. *J Mol Biol* 2009;385:1556–67.
- Grasso G, Rizzarelli E, Spoto G. The proteolytic activity of insulin-degrading enzyme: a mass spectrometry study. *J Mass Spectrom* 2009;44:735–41.
- Grasso G, Bonnet S. Metal complexes and metalloproteases: targeting conformational diseases. *Metallomics* 2014;6: 1346–57.
- Tundo GR, Sbardella D, Ciaccio C, et al. Multiple functions of insulin-degrading enzyme: a metabolic crosslight? *Crit Rev Biochem Mol Biol* 2017;52:554–82.
- Grasso G. The use of mass spectrometry to study Zn-metalloprotease-substrate interactions. *Mass Spectrom Rev* 2020; 39:574–85.
- Grasso G. Monitoring the biomolecular interactions and the activity of Zn-containing enzymes involved in conformational diseases: experimental methods for therapeutic purposes. *Adv Protein Chem Struct Biol* 2014;97:115–42.
- Grasso G. Mass spectrometry is a multifaceted weapon to be used in the battle against Alzheimer's disease: amyloid beta peptides and beyond. *Mass Spectrom Rev* 2019;38:34–48.
- Kurochkin IV. Insulin-degrading enzyme: embarking on amyloid destruction. *Trends Biochem Sci* 2001;26:421–5.
- Cabrol C, Huzarska MA, Dinolfo C, et al. Small-molecule activators of insulin-degrading enzyme discovered through high-throughput compound screening. *PloS One* 2009;4: e5274.
- Song E-S, Juliano MA, Juliano L, Hersh LB. Substrate activation of insulin-degrading enzyme (insulysin). A potential target for drug development. *J Biol Chem* 2003;278:49789–94.
- Kukidome D, Nishikawa T, Sato M, et al. Measurement of small fibre pain threshold values for the early detection of diabetic polyneuropathy. *Diabet Med J Br Diabet Assoc* 2016;33:62–9.